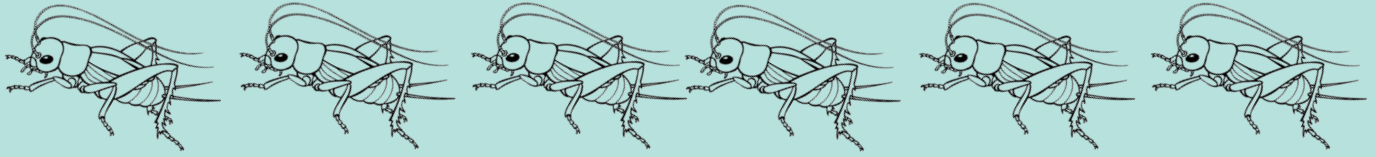


NIGHT HIKE & CAMPFIRE



Date: Thursday, July 7

Time: 8:00 PM to 10:00 PM

Location: Echo Hill

Ages: 7 through adult

Cost: \$3 per person



Explore the park at night to see what is happening in nature after dark! We will do a night hike to listen to night insects and learn about the adaptations of nocturnal animals. We will do a series of activities to learn about how our eyes work in the dark. We will also enjoy a campfire, with stories and songs! Feel free to bring your own campfire snack. Enjoy this as a supplement to one of our weeklong summer programs or as its own experience.

PRE-REGISTRATION REQUIRED

HUNTERDON COUNTY DIVISION OF PARKS & RECREATION

Mailing Address: P.O. Box 2900, Flemington, NJ 08822-2900

Office Location: 1020 State Highway 31, Lebanon, NJ

Telephone (908) 782-1158 · Fax (908) 806-4057

Email: parks@co.hunterdon.nj.us · www.co.hunterdon.nj.us "Parks & Recreation"

