

**COUNTY OF HUNTERDON  
STATE OF NEW JERSEY**

**SCANNED TAX MAP DISCLAIMER**

This is a copy of a Tax Map submitted to the Hunterdon County Tax Board by the Municipality indicated on the map. It is being made available as a convenience to the public. To the best of the County's knowledge it has not been altered in any way before, during or after it was scanned however, this map is not to be considered an Official Copy of the Municipality's Tax Map. An Official Copy of each Tax Map must be obtained from the respective municipality.

The County of Hunterdon does not certify, endorse or warrant (express or implied) the authenticity of these maps (including but not limited to their: accuracy, quality, scale, timeliness, content, completeness, quality, or reliability) or any information found herein. This information was not developed by the County of Hunterdon and is provided on an "as is" basis. Any person or entity which relies on the information does so at their own risk. The County shall not be held liable for any loss, damage, cost or expense relating to, or arising out of the use of these Tax Maps.

# KEY MAP



## KINGWOOD TOWNSHIP HUNTERDON COUNTY

### LEGEND

- Dashed Line indicates SHEET BOUNDARY
- ④ This type numeral indicates SHEET NUMBER
- ④ This type numeral indicates BLOCK NUMBER

I hereby certify that this map and the survey have been made under my immediate supervision and comply with the laws of the STATE OF NEW JERSEY.

11/1/61  
DATE *Frank W. Dolan, C.E.*  
FRANK W. DOLAN, C.E. # 2088

REVISIONS		
DATE	LAND SURVEYOR'S NAME	L.S. No.
5/17/89	NEIL VAN CLEEF	13866
12/22/89	ERR. MELNICK	34013
12/15/90	ERR. MELNICK	34013
1/9/92	ERR. MELNICK	34013
2/5/96	ERR. MELNICK	34013
3/4/97	ERR. MELNICK	34013
2/17/00	ERR. MELNICK	34013
12/31/01	CARL M. HERRMAN	42271
JAN. 03	CARL M. HERRMAN	42271

**VAN CLEEF ENGINEERING ASSOCIATES**  
CONSULTING CIVIL & ENVIRONMENTAL ENGINEERS  
& LAND SURVEYORS  
HUNTERDON COUNTY OFFICE: 100 Main St., Flemington, N.J. 08822  
GREENE COUNTY OFFICE: 100 Main St., Flemington, N.J. 08822  
REVISOR: 12/1/67, 12/30/68, 5/17/69, 12/22/69, 12/15/90, 1/9/92, 2/5/96  
DEC. 03 CARL M. HERRMAN 42271

NEIL I. VAN CLEEF P.E. & L.S.  
N.J. LIC. NO. 13056  
revised: 9/9/81, 9/26/83, 4/10/84, 1/9/86, 2/6/87

**STUDER AND McELDOWNEY, P.A.**  
CIVIL ENGINEERS  
LAND SURVEYORS  
PLANNERS  
120 HIGHWAY 22  
CLINTON, N.J. 08809  
(609) 735-7147

H. CLAY McELDOWNEY, P.E. & L.S.  
New Jersey license no. 20891

**ROBERT BOGART & ASSOCIATES**  
ROUTE 312 EMERY AVE., FLEMINGTON, NEW JERSEY  
REVISOR: 12/28/72

NEW JERSEY DEPARTMENT OF TREASURY  
DIVISION OF TAXATION  
ENGINEERING & RAILROAD TAX BUREAU  
APPROVED AS A TAX MAP PURSUANT TO THE PROVISIONS OF CHAPTER 175, LAWS OF 1913, ETC. FOR THE DIRECTOR, DIVISION OF TAXATION  
ON *Frank W. Dolan, C.E.*  
DATE APR 10 1961 SERIAL NO. 313

# TAX MAP

FRENCHTOWN BOROUGH  
Hunterdon County, N.J.

Scale: 1" = 300' Jan 1961

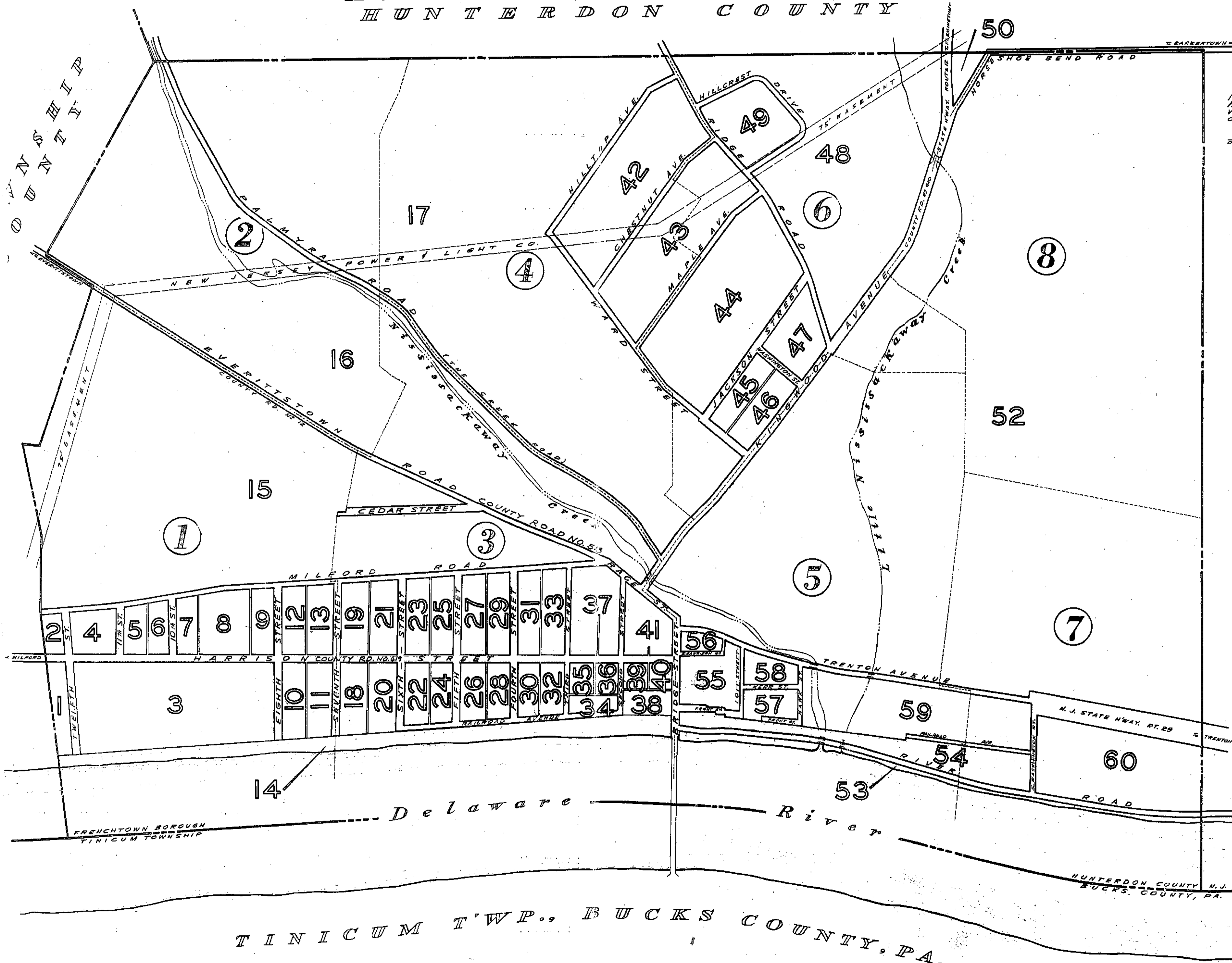
*Frank W. Dolan, C.E.*  
30 CHURCH ST., FLEMINGTON, N.J.

REVISED: To show conditions as of January 1, 1961  
12/1/70 2/13/01

NOTE: THIS MAP SUPERSEDES MAP APPROVED MAY 1, 1961.

ALEXANDRIA TOWNSHIP

KINGWOOD TOWNSHIP



TINICUM TWP., BUCKS COUNTY, PA.

# ALEXANDRIAN HUNTERDON

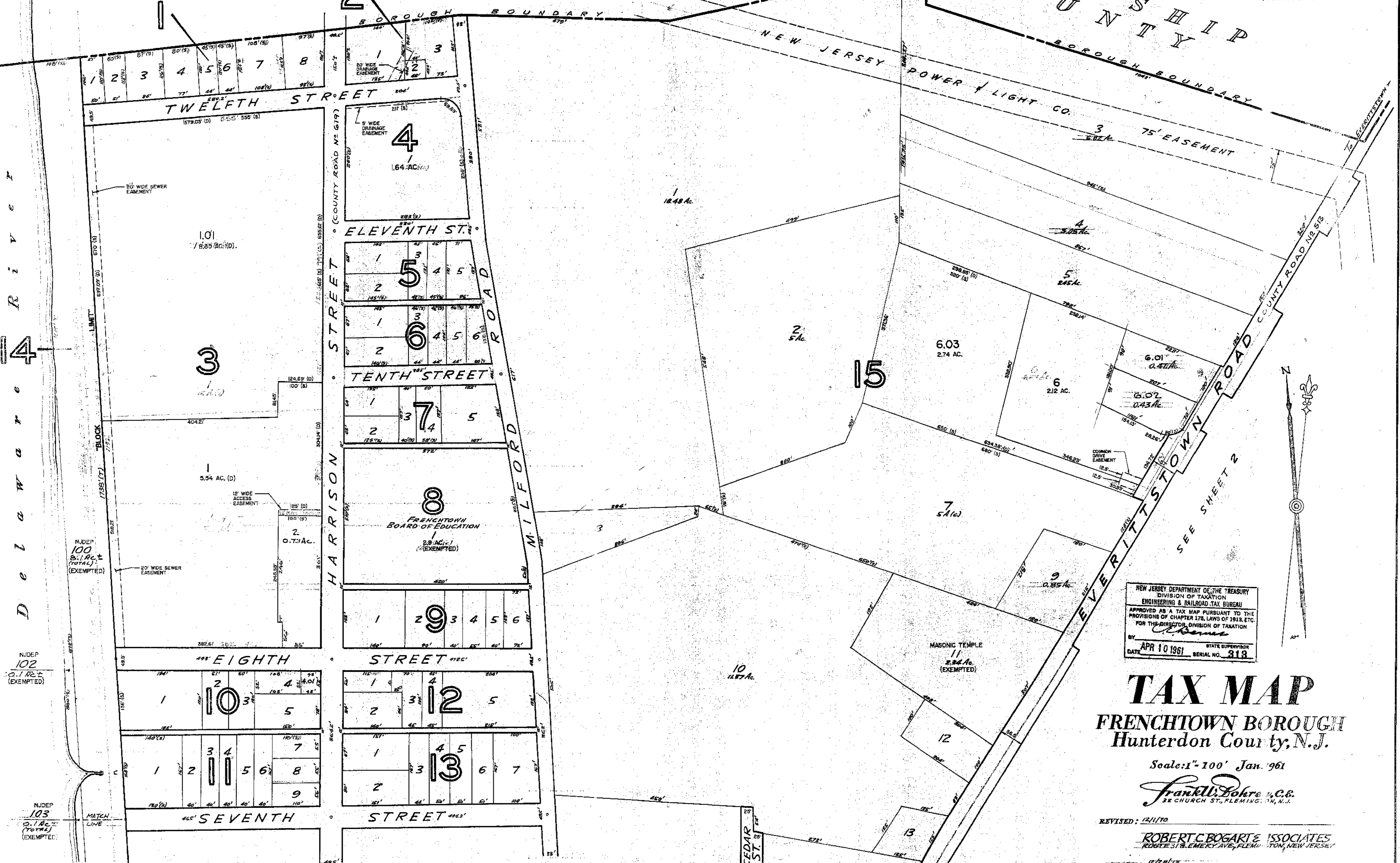
# TOWNSHIP

VAN CLEEF ENGINEERING ASSOCIATES  
157 ROUTE 31, LEBANON, NEW JERSEY

REVISED: 07/18/91, 12/15/90, 11/9/89, 2/15/88

JAN. 1999 ERROL MELNICK, P.L.S. N.J. LIC. No. 34013  
FEB. 2000 ERROL MELNICK, P.L.S. N.J. LIC. No. 34013  
DEC. 2001 CARL M. HERRMAN, P.L.S. N.J. LIC. No. 42271  
JAN. 2003 CARL M. HERRMAN, P.L.S. N.J. LIC. No. 42271  
DEC. 2003 CARL M. HERRMAN, P.L.S. N.J. LIC. No. 42271

Delaware River



NEW JERSEY DEPARTMENT OF THE TREASURY  
DIVISION OF TAXATION  
ENGINEERING & RAILROAD TAX BUREAU  
APPROVED AS A TAX MAP PURSUANT TO THE  
PROVISIONS OF CHAPTER 176, LAWS OF 1913, ETC.  
FOR THE DIRECTOR, DIVISION OF TAXATION  
BY: *[Signature]*  
DATE: APR 10 1961 STATE SUPERVISOR  
SERIAL NO. 313

## TAX MAP FRENCHTOWN BOROUGH Hunterdon County, N.J.

Scale: 1" = 100' Jan. '961

*Frank W. Bohre & Co.*  
38 CHURCH ST., FLEMINGTON, N.J.

REVISED: 12/1/10

ROBERT C. BOGART & ASSOCIATES  
1000E 318 EMERY AVE., FLEMINGTON, NEW JERSEY

REVISED: 10/28/15

SEE KEY MAP FOR LATEST REVISION DATE

SEE SHEET 3

# TAX MAP

## FRENCHTOWN BOROUGH Hunterdon County, N.J.

Scale: 1" = 100' Jan 1961

*Frank W. Bohren, C.E.*  
28 CHURCH ST., FLEMINGTON, N.J.

REVISED: 12/1/70

**ROBERT C. BOGART & ASSOCIATES**  
ROUTE 31 & EMERY AVE., FLEMINGTON, NEW JERSEY

REVISED: 12/28/73

SEE KEY MAP FOR LATEST REVISION DATE



SEE SHEET 1

**VAN NEEF ENGINEERING ASSOCIATES**  
157 ROUTE 31, LEBANON, NEW JERSEY

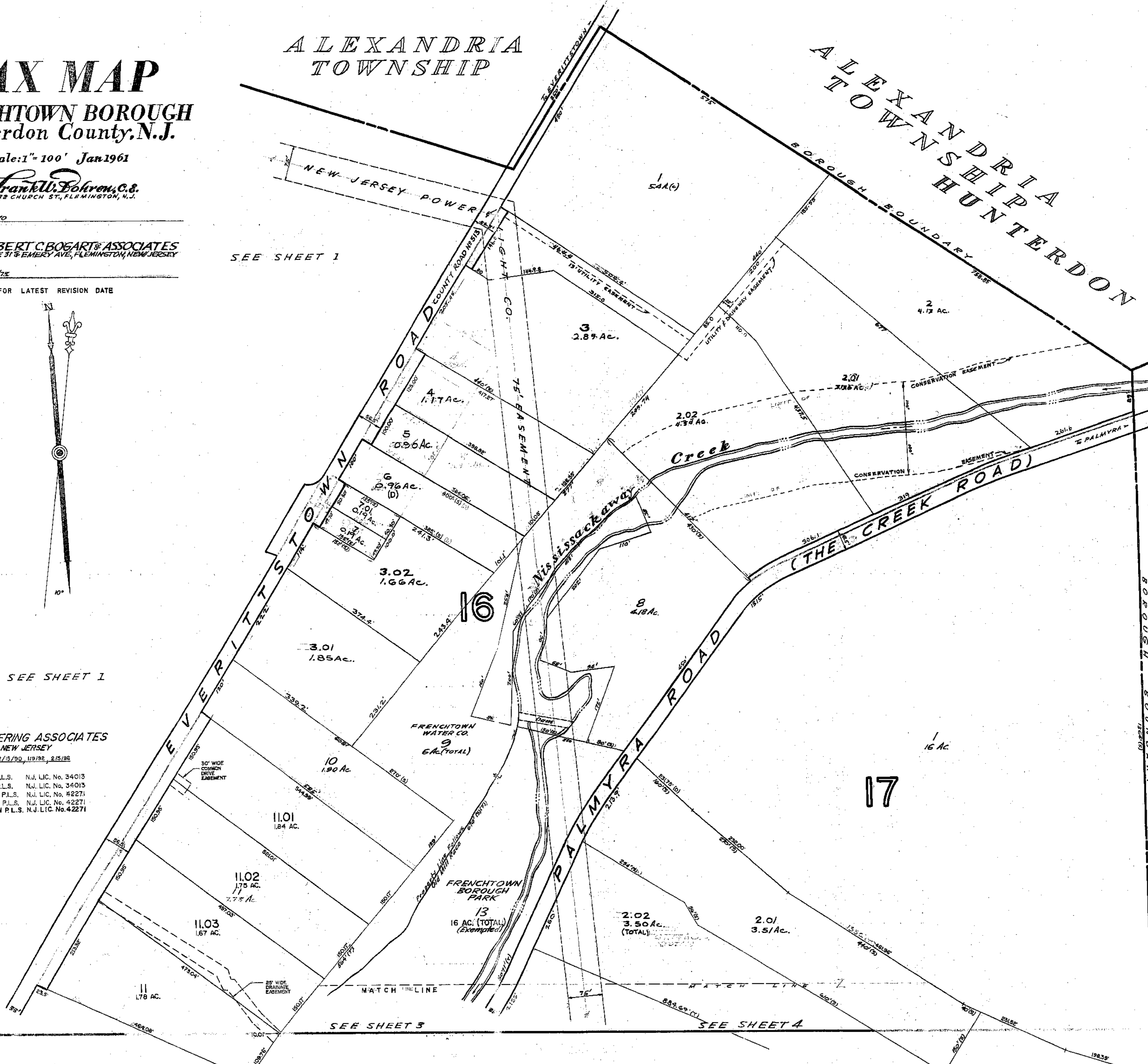
REVISED: JAN 11 1982, 5/17/83, 12/15/90, 1/19/92, 2/15/96

- JAN 1961 ERROL MELNICK, P.L.S. N.J. LIC. No. 34013
- FEB 1962 ERROL MELNICK, P.L.S. N.J. LIC. No. 34013
- DEC 20 63 CARL M. HERRMAN, P.L.S. N.J. LIC. No. 42271
- JAN 20 65 CARL M. HERRMAN, P.L.S. N.J. LIC. No. 42271
- DEC 20 65 CARL M. HERRMAN, P.L.S. N.J. LIC. No. 42271

### ALEXANDRIA TOWNSHIP

### ALEXANDRIA TOWNSHIP HUNTERDON BOROUGH BOUNDARY

### KINGWOOD TOWNSHIP BOUNDARY



SEE SHEET 1

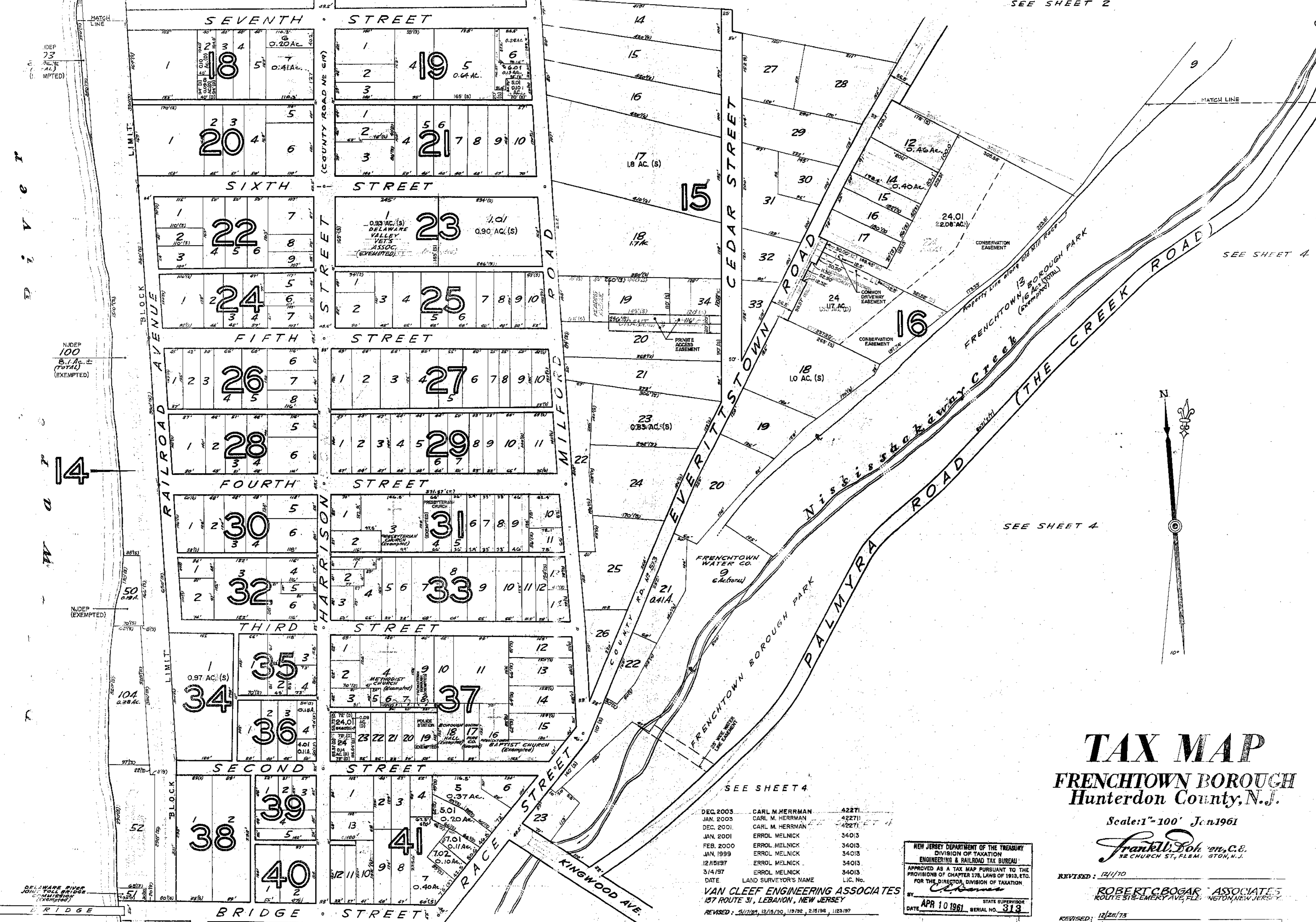
# 16

# 17

SEE SHEET 3

SEE SHEET 4

NEW JERSEY DEPARTMENT OF THE TREASURY  
DIVISION OF TAXATION  
ENGINEERING & RAILROAD TAX BUREAU  
APPROVED AS A TAX MAP PURSUANT TO THE  
PROVISIONS OF CHAPTER 175, LAWS OF 1912, ETC.  
FOR THE DIRECTOR, DIVISION OF TAXATION  
*Chas. J. ...*  
STATE SUPERVISOR  
APR 10 1961 SERIAL NO. 313



# TAX MAP

## FRENCHTOWN BOROUGH

### Hunterdon County, N.J.

Scale: 1"=100' Jan 1961

*Frank W. Doherty, C.E.*  
32 CHURCH ST., FLEMINGTON, N.J.

REVISED: 12/1/70

**ROBERT C. BOGAR ASSOCIATES**  
ROUTE 512-EMERY AVE., FLEMINGTON, NEW JERSEY

REVISED: 12/28/73  
SEE KEY MAP FOR LATEST REVISION DATA

SEE SHEET 4

DEC. 2003	CARL M. HERRMAN	42271
JAN. 2003	CARL M. HERRMAN	42271
DEC. 2001	CARL M. HERRMAN	42271
JAN. 2001	ERROL MELNICK	34013
FEB. 2000	ERROL MELNICK	34013
JAN. 1999	ERROL MELNICK	34013
12/18/97	ERROL MELNICK	34013
3/4/97	ERROL MELNICK	34013
DATE	LAND SURVEYOR'S NAME	LIC. No.

**VAN CLEEF ENGINEERING ASSOCIATES**  
157 ROUTE 31, LEBANON, NEW JERSEY  
REVISED: 5/12/81, 12/15/90, 1/19/92, 2/15/96, 1/23/97

NEW JERSEY DEPARTMENT OF THE TREASURY  
DIVISION OF TAXATION  
ENGINEERING & RAILROAD TAX BUREAU

APPROVED AS A TAX MAP PURSUANT TO THE PROVISIONS OF CHAPTER 178, LAWS OF 1918, ETC. FOR THE DIRECTOR, DIVISION OF TAXATION.

*Chambers*

STATE SUPERVISOR  
DATE: APR 10 1961 SERIAL NO. 313

# TAX MAP

## FRENCHTOWN BOROUGH

### Hunterdon County, N.J.

Scale: 1" = 100' Jan 1961

*Frank W. Bohren, C.E.*  
32 CHURCH ST., FLEMINGTON, N.J.

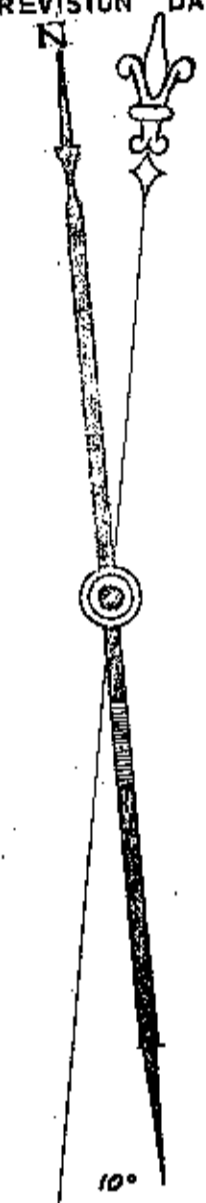
REVISION: 12/11/70  
**ROBERT C. BOGART ASSOCIATES**  
ROUTE 31 & EMERY AVE., FLEMINGTON, NEW JERSEY.

REVISION: 12/28/75  
SEE KEY MAP FOR LATEST REVISION DATE

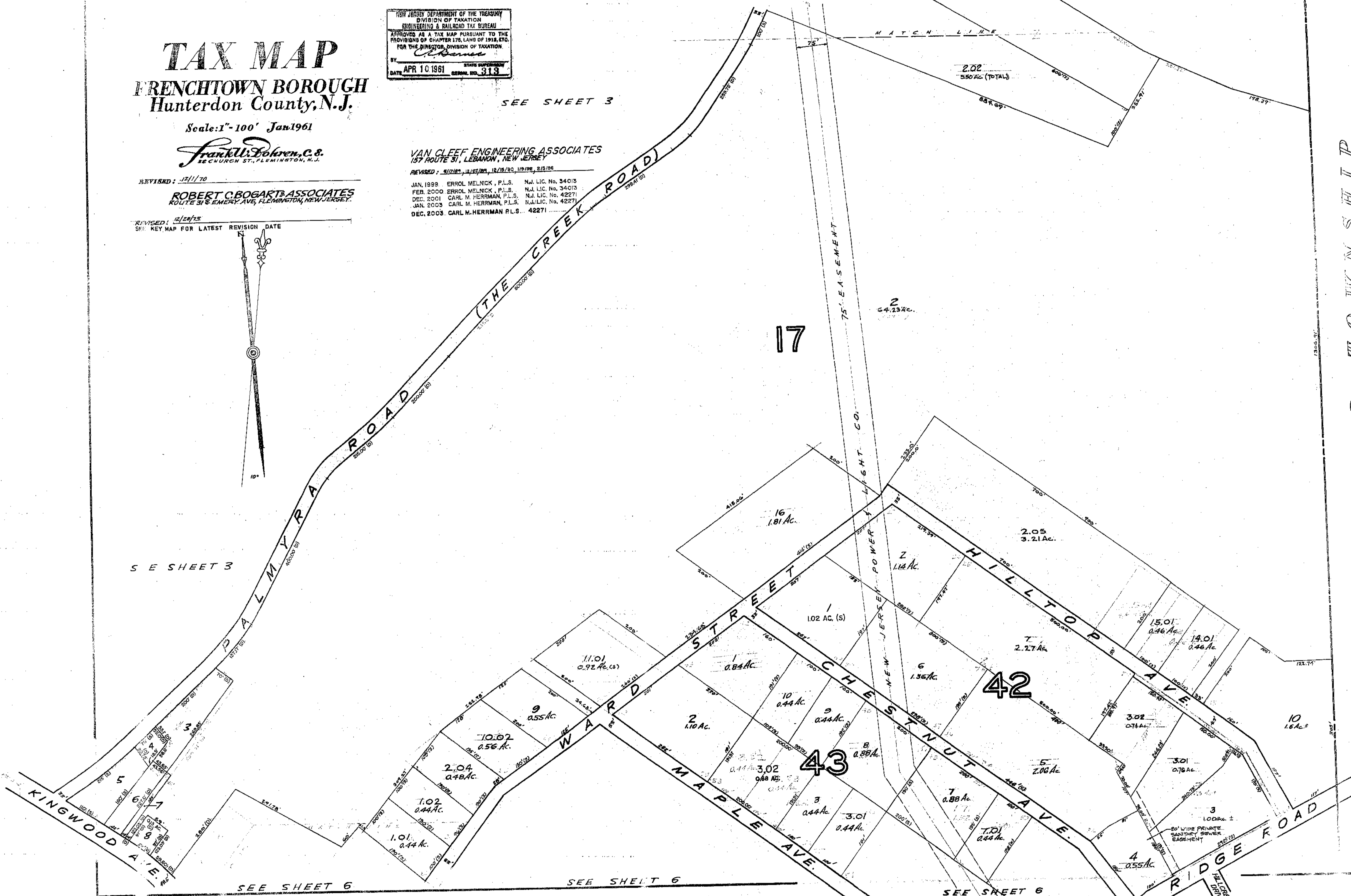
NEW JERSEY DEPARTMENT OF THE TREASURY  
DIVISION OF TAXATION  
ENGINEERING & RAILROAD TAX BUREAU  
APPROVED AS A TAX MAP PURSUANT TO THE  
PROVISIONS OF CHAPTER 176, LAWS OF 1912, ETC.,  
FOR THE DIRECTOR, DIVISION OF TAXATION  
BY: *C. Bohren*  
DATE: APR 10 1961 STATE SUPERVISOR  
SERIAL NO. 313

SEE SHEET 3

**VAN CLEEF ENGINEERING ASSOCIATES**  
157 ROUTE 31, LEBANON, NEW JERSEY  
REVISED: 9/17/83, 12/22/83, 12/18/83, 11/8/84, 2/5/86  
JAN. 1999 ERROL MELNICK, P.L.S. N.J. LIC. No. 34013  
FEB. 2000 ERROL MELNICK, P.L.S. N.J. LIC. No. 34013  
DEC. 2001 CARL M. HERRMAN, P.L.S. N.J. LIC. No. 42271  
JAN. 2003 CARL M. HERRMAN, P.L.S. N.J. LIC. No. 42271  
DEC. 2003 CARL M. HERRMAN P.L.S. 42271



SEE SHEET 3



SEE SHEET 6

SEE SHEET 6

SEE SHEET 6

KINGWOOD TOWNSHIP  
HUNTERDON COUNTY

SEE SHEET 3

SEE SHEET 4

VAN CLEEF ENGINEERING ASSOCIATES  
157 ROUTE 31, LEBANON, NEW JERSEY

REVISED: 8/1/81, 12/15/88, 11/1/98, 2/15/04, 2/15/08

JAN. 1999 ERROL MELNICK, P.L.S. N.J. LIC. No. 34013  
 FEB. 2000 ERROL MELNICK, P.L.S. N.J. LIC. No. 34013  
 JAN. 2001 ERROL MELNICK, P.L.S. N.J. LIC. No. 34013  
 DEC. 2001 CARL M. HERRMAN, P.L.S. N.J. LIC. No. 42271  
 JAN. 2003 CARL M. HERRMAN, P.L.S. N.J. LIC. No. 42271  
 DEC. 2005 CARL M. HERRMAN, P.L.S. N.J. LIC. No. 42271

# TAX MAP

## FRENCHTOWN BOROUGH

### Hunterdon County, N.J.

Scale: 1" = 100' Jan 1961

*Franklin Doherty, C.E.*  
 52 CHURCH ST., FLEMINGTON, N.J.

REVISED: 12/1/70

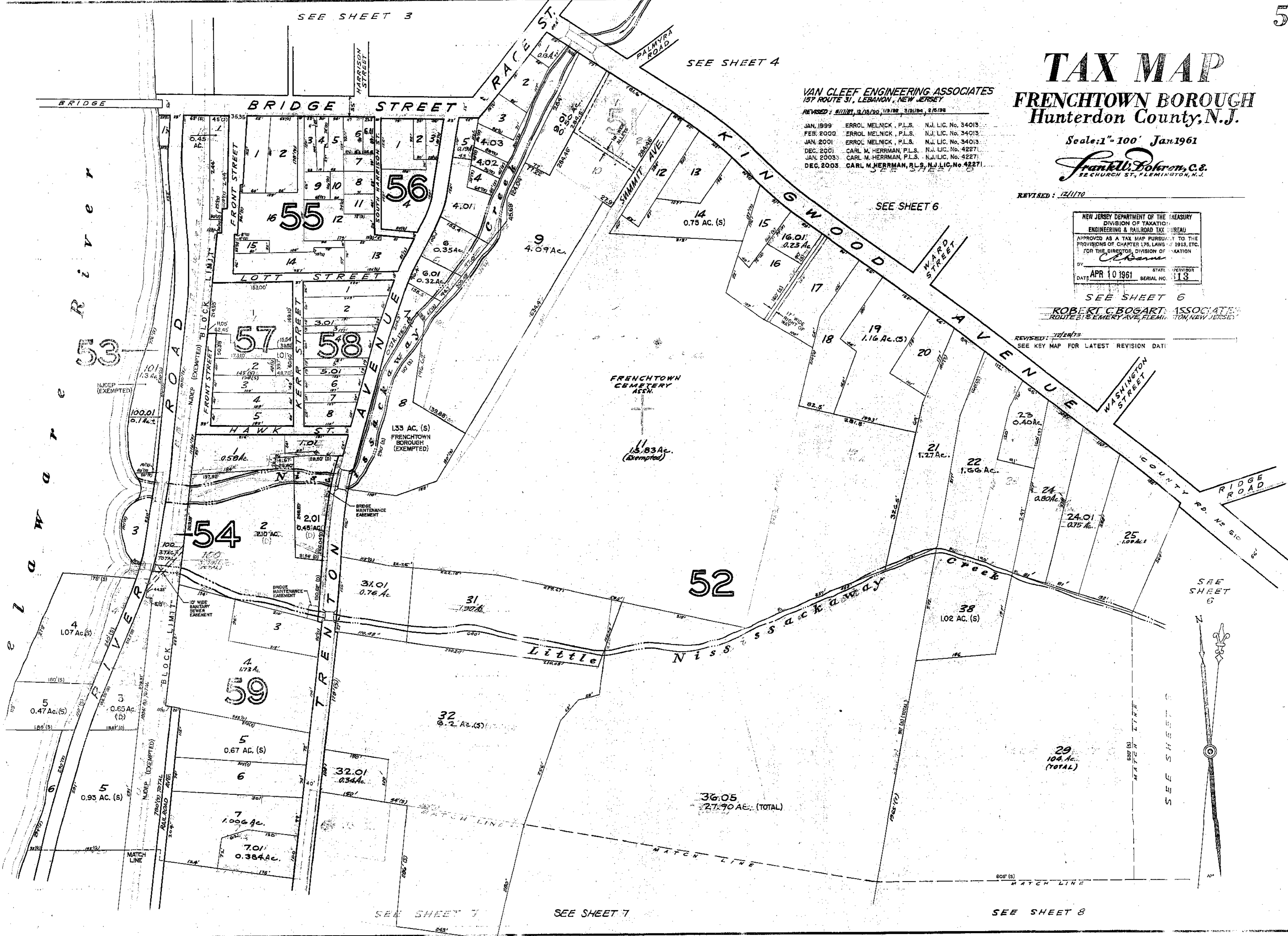
NEW JERSEY DEPARTMENT OF THE TREASURY  
 DIVISION OF TAXATION  
 ENGINEERING & RAILROAD TAX BUREAU  
 APPROVED AS A TAX MAP PURSUANT TO THE  
 PROVISIONS OF CHAPTER 175, LAWS OF 1913, ETC.  
 FOR THE DIRECTOR, DIVISION OF TAXATION  
 BY: *C. Bogart*  
 DATE: APR 10 1961 STATE SUPERVISOR  
 SERIAL NO. 113

SEE SHEET 6

ROBERT C. BOGART ASSOCIATES  
 ROUTE 51 & EMERY AVE., FLEMINGTON, NEW JERSEY

REVISED: 7/28/73

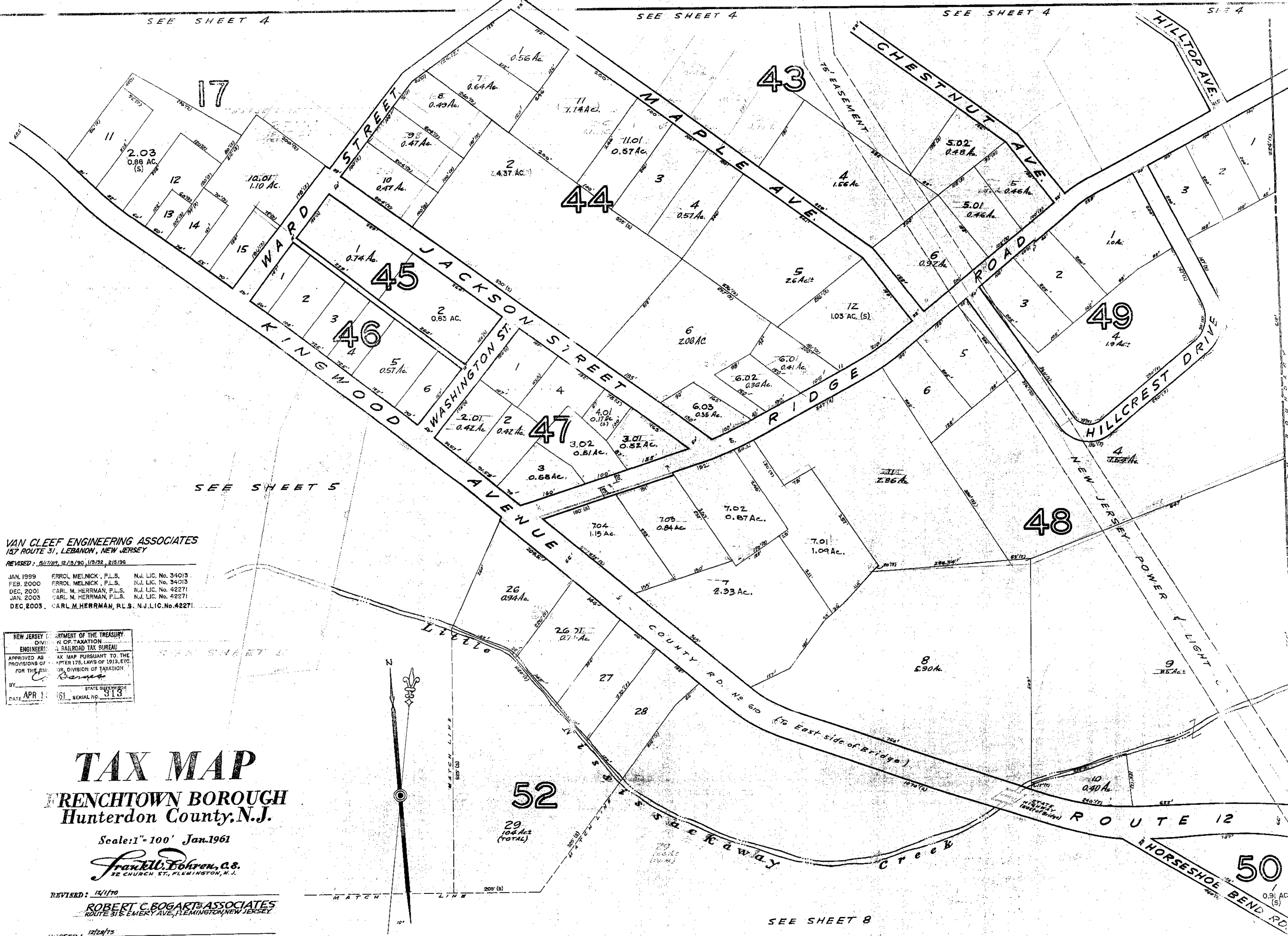
SEE KEY MAP FOR LATEST REVISION DATE



SEE SHEET 7

SEE SHEET 7

SEE SHEET 8



KINGWOOD TOWNSHIP  
 HUNTERDON COUNTY

**VAN CLEEF ENGINEERING ASSOCIATES**  
 157 ROUTE 31, LEBANON, NEW JERSEY

REVISED: 5/17/89, 12/15/90, 1/19/92, 2/15/95  
 JAN. 1999 ERROL MELNICK, P.L.S. N.J. LIC. No. 34013  
 FEB. 2000 ERROL MELNICK, P.L.S. N.J. LIC. No. 34013  
 DEC. 2001 CARL M. HERRMAN, P.L.S. N.J. LIC. No. 42271  
 JAN. 2003 CARL M. HERRMAN, P.L.S. N.J. LIC. No. 42271  
 DEC. 2003 CARL M. HERRMAN, P.L.S. N.J. LIC. No. 42271

NEW JERSEY DEPARTMENT OF THE TREASURY  
 DIVISION OF TAXATION  
 ENGINEERING RAILROAD TAX BUREAU  
 APPROVED AS TAX MAP PURSUANT TO THE PROVISIONS OF THE ACT OF APRIL 17, 1913, ETC.  
 FOR THE DIVISION OF TAXATION  
 BY: *Carver*  
 DATE: APR 15 1961 SERIAL NO. 318

# TAX MAP

## FRENCHTOWN BOROUGH

### Hunterdon County, N.J.

Scale: 1" = 100' Jan. 1961

*Frank W. Bohren, C.S.*  
 22 CHURCH ST., FLEMINGTON, N.J.

REVISED: 12/1/70  
**ROBERT C. BOGART & ASSOCIATES**  
 ROUTE 51 & EMERY AVE., FLEMINGTON, NEW JERSEY

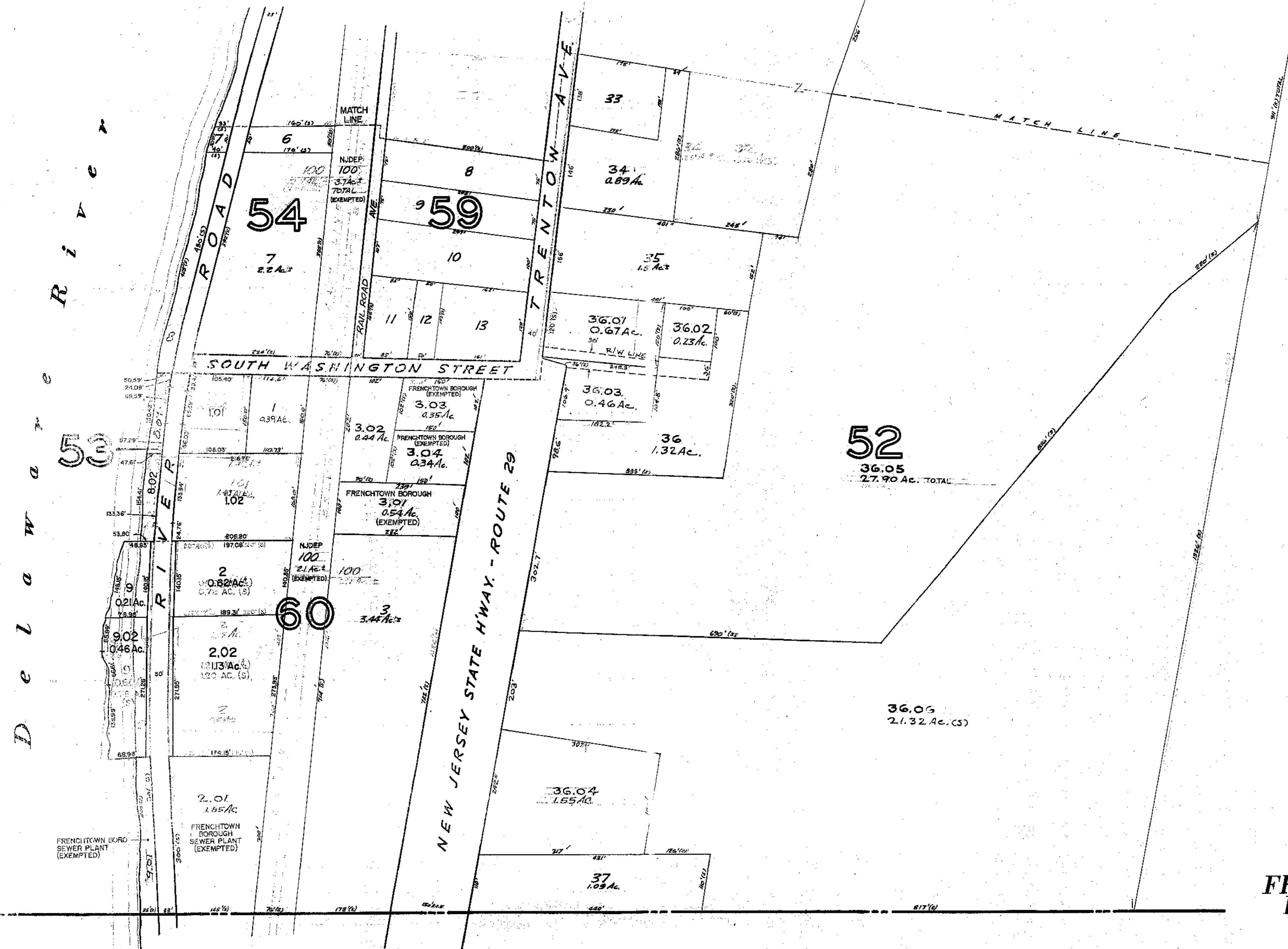
REVISED: 12/28/75  
 SEE KEY MAP FOR LATEST REVISION DATE

SEE SHEET 8



SEE SHEET 5

SEE SHEET 5



SEE SHEET 8

VAN CLEEF ENGINEERING ASSOCIATES  
157 ROUTE 31, LEBANON, NEW JERSEY

REVISED: JAN. 11, 1982; JULY 12, 1980; 12/15/80, 12/15/82, 2/5/86

- JAN. 1999 ERROL MEYER, P.L.S. N.J. Lic. No. 34013
- FEB. 2000 ERROL MEYER, P.L.S. N.J. Lic. No. 34013
- DEC. 2001 CARL M. PERMAN, P.L.S. N.J. Lic. No. 42271
- JAN. 2003 CARL M. PERMAN, P.L.S. N.J. Lic. No. 42271
- DEC. 2003 CARL M. PERMAN, P.L.S. N.J. Lic. No. 42271

36.06  
21.32 AC. (S)

**TAX MAP**  
**FRENCHTOWN BOROUGH**  
 Hunterdon County, N.J.

Scale: 1" = 100' Jan 1961

*Frank W. Johnson, C.E.*  
55 CHURCH ST., FLEMINGTON, N.J.

REVISED: 12/11/70

**ROBERT C. BOGART ASSOCIATES**  
ROUTE 318, EMERY AVE, FLEMINGTON, NEW JERSEY

REVISED: 12/20/73  
SEE KEY MAP FOR LATEST REVISION DATE

**KINGWOOD TOWNSHIP**  
**HUNTERDON COUNTY**

NEW JERSEY DEPARTMENT OF THE TREASURY  
 DIVISION OF TAXATION  
 ENGINEERING & RAILROAD TAX BUREAU

APPROVED AS A TAX MAP PURSUANT TO THE  
 PROVISIONS OF CHAPTER 175, LAWS OF 1913, ETC.  
 FOR THE DIRECTOR, DIVISION OF TAXATION

BY: *[Signature]*

DATE: APR 10 1961 SERIAL NO. 319

Delaware River

51

54

59

60

52

36.04  
1.55 AC.

37  
1.09 AC.

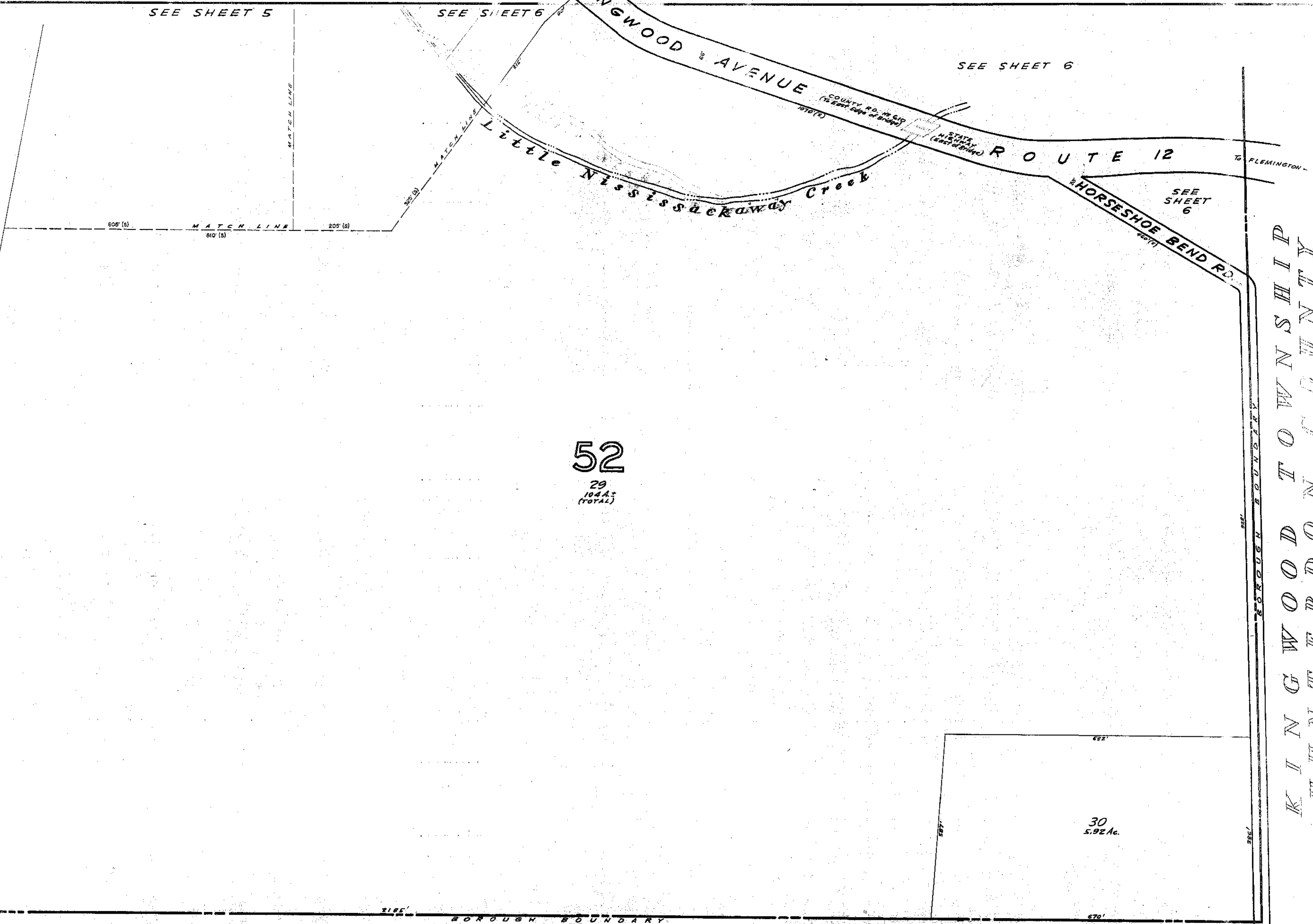
SEE SHEET 5

SEE SHEET 6

SEE SHEET 6



SHEET 7



52  
29  
104.4±  
(TOTAL)

30  
5.92 Ac.

K I N G W O O D T O W N S H I P  
H U N T E R D O N C O U N T Y

K I N G W O O D T O W N S H I P, H U N T E R D O N C O U N T Y

NEW JERSEY DEPARTMENT OF THE TREASURY  
DIVISION OF TAXATION  
ENGINEERING & RAILROAD TAX BUREAU  
APPROVED AS A TAX MAP PURSUANT TO THE  
PROVISIONS OF CHAPTER 175, LAWS OF 1918, ETC.  
FOR THE DIRECTOR, DIVISION OF TAXATION:  
*A. Barnes*  
BY: *A. Barnes*  
DATE: APR 10 1961 STATE SUPERVISOR  
SERIAL NO. 313

TAX MAP

VAN CLEEF ENGINEERING ASSOCIATES  
157 ROUTE 31, LEBANON, NEW JERSEY

FRENCHTOWN BOROUGH  
Hunterdon County, N.J.

ROBERT C. BOGART & ASSOCIATES  
ROUTE 31 S. EMERY AVE., FLEMINGTON, NEW JERSEY

Frank W. Dokren, C.S.  
32 CHURCH ST., FLEMINGTON, N.J.  
REV. 12/1/70 SEE KEY MAP FOR LATEST REVISION DATE

Scale: 1" = 100'  
Jan. 1961

DEC. 2003 CARL M. HERRMAN, P.L.S. N.J. LIC. #42271  
JAN. 2003 CARL M. HERRMAN, P.L.S. N.J. LIC. #42271  
DEC. 2001 CARL M. HERRMAN, P.L.S. N.J. LIC. #42271  
FEB. 2000 ERROL MELNICK, P.L.S. N.J. LIC. #34013  
JAN. 1999 ERROL MELNICK, P.L.S. N.J. LIC. #34013

REVISED: 5/17/81, 12/15/80, 11/9/82, 2/5/86

REVISED: 12/1/75

BOROUGH BOUNDARY

BOROUGH BOUNDARY

BOROUGH BOUNDARY

BOROUGH BOUNDARY

MATCH LINE

MATCH LINE

SEE SHEET 6

To FLEMINGTON

COUNTY RD. 126 SR  
To East Edge of Bridge

STATE HIGHWAY  
(East of Bridge)

Little Nississackaway Creek

KINGWOOD AVENUE

ROUTE 12

HORSESHOE BEND RD.

605' (S)

810' (S)

205' (S)

300' (S)

1070' (S)

440' (S)

1465' (W)

632'

597'

670'

581'

BOROUGH BOUNDARY