

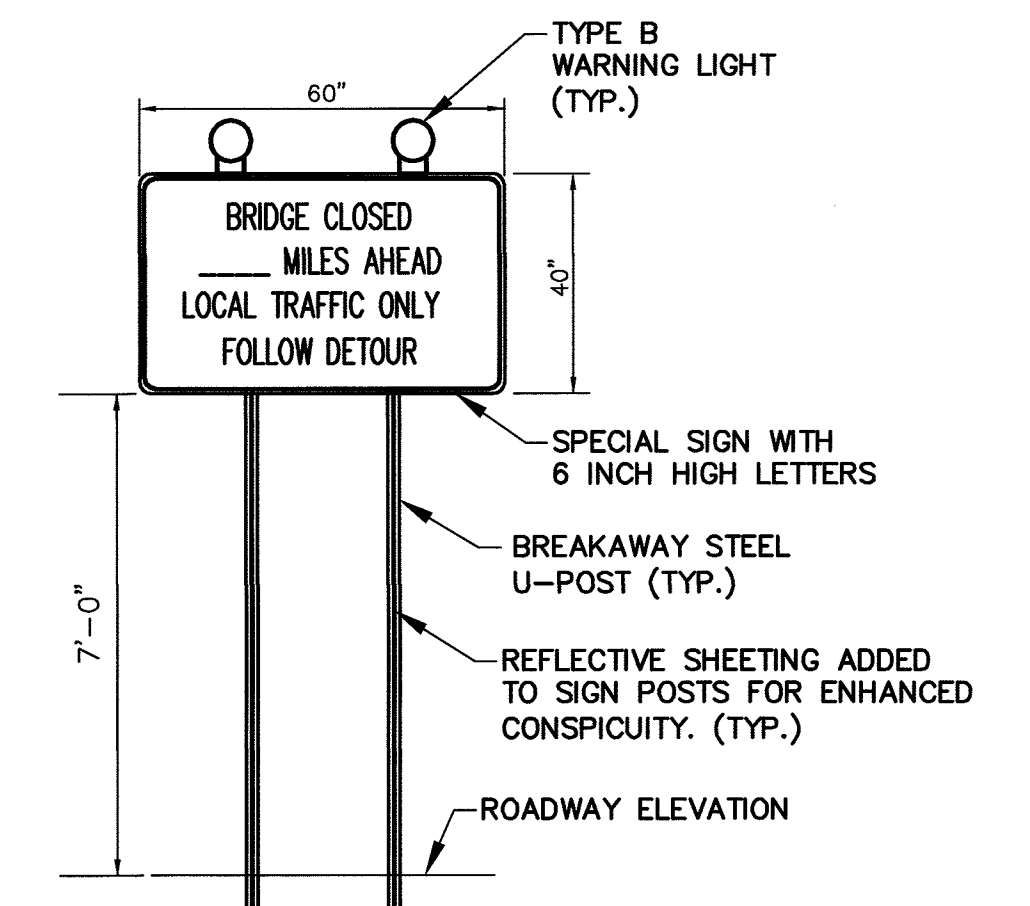
DETOUR PLAN
NOT TO SCALE

GENERAL NOTE:

- 1) THE "ON OR ABOUT" SPECIAL SIGNS SHALL BE POSTED A MINIMUM OF TWO (2) WEEKS PRIOR TO ROAD CLOSURE.
- 2) DIMENSIONS, COLORS AND DETAILS OF VARIOUS SIZE SHIELDS AND ACCESSORY PANELS TO FOLLOW STANDARDS IN THE CURRENT STANDARD HIGHWAY SIGNS PUBLICATION AND THE CURRENT MANUAL ON UNIFORM TRAFFIC CONTROL DEVICES FOR STREETS AND HIGHWAYS.
- 3) ALL SIGNS SHALL BE ASTM D 4956 TYPE III SHEETING. WOOD SIGNS ARE NOT PERMITTED.
- 4) ALL SIGNS SHALL BE DESIGNED TO MAINTAIN SIGN RETROREFLECTIVITY AT OR ABOVE MINIMUM LEVELS IN ACCORDANCE WITH MUTCD TABLE 2A-3.
- 5) THE CONTRACTOR SHALL MAINTAIN ACCESS TO ALL DRIVEWAYS AT ALL TIMES DURING CONSTRUCTION. THIS MAY REQUIRE DAILY RELOCATION OF BREAKAWAY BARRICADES, OR CONTRACTOR CAN PROVIDE PROVISION FOR TEMPORARY DRIVEWAY ACCESS.
- 6) NO SEPARATE PAYMENT WILL BE MADE FOR RELOCATION OF BREAKAWAY BARRICADES OR TEMPORARY DRIVEWAY ACCESS. COSTS THEREOF ARE TO BE INCLUDED IN THE VARIOUS PAY ITEMS IN THE PROPOSAL.
- 7) NO SEPARATE PAYMENT WILL BE MADE FOR RELOCATING TRAFFIC CONTROL DEVICES AND CONSTRUCTION BARRIER CURB AS REQUIRED FOR FULL OR PARTIAL ROADWAY CLOSURE. ALL COSTS SHALL BE INCLUDED IN THE VARIOUS PAY ITEMS IN THE PROPOSAL.
- 8) A TYPE III BREAKAWAY BARRICADE SHALL BE PLACED ON THE PAVEMENT SHOULDER ALONG SIDE SIGN TYPE "B".
- 9) ALL SIGN LOCATIONS SHOWN ARE APPROXIMATE SUBJECT TO FIELD CONDITIONS AND AS DIRECTED BY THE ENGINEER.

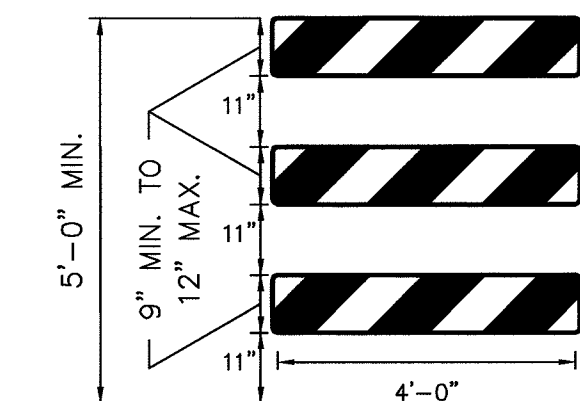
STANDARD SIGNS					
SIGN	LEGEND	TYPE	SIZE	MOUNT	NO. REQ.
A		R11-2	48" x 30"	BARRICADE	3
B		R11-3B	60" x 30"	2 POSTS	3
C		W20-2	48" x 48"	2 POSTS	4
D		M4-9R	30" x 24"	1 POSTS	6
E		M4-9L	30" x 24"	1 POSTS	5
F		M4-9X	30" x 24"	1 POSTS	6
G		M4-8A	24" x 18"	1 POSTS	5
H			24" x 24"	0 POST	8

SPECIAL SIGNS (ALL BLACK ON ORANGE)				
SIGN	LEGEND	SIZE	MOUNT	NO. REQ.
S1		60" x 40"	2 POSTS	2
S2		60" x 40"	2 POSTS	3
S3		60" x 40"	2 POSTS	4
S4		30" x 10"	0	7
S5		30" x 10"	0	4



NOTE:
SPECIAL SIGN S1 THRU S4 SHALL INCLUDE THE REFLECTIVE SHEETING ON THE SIGN POSTS AND TYPE B WARNING LIGHTS.

SPECIAL SIGN INSTALLATION DETAIL
NOT TO SCALE

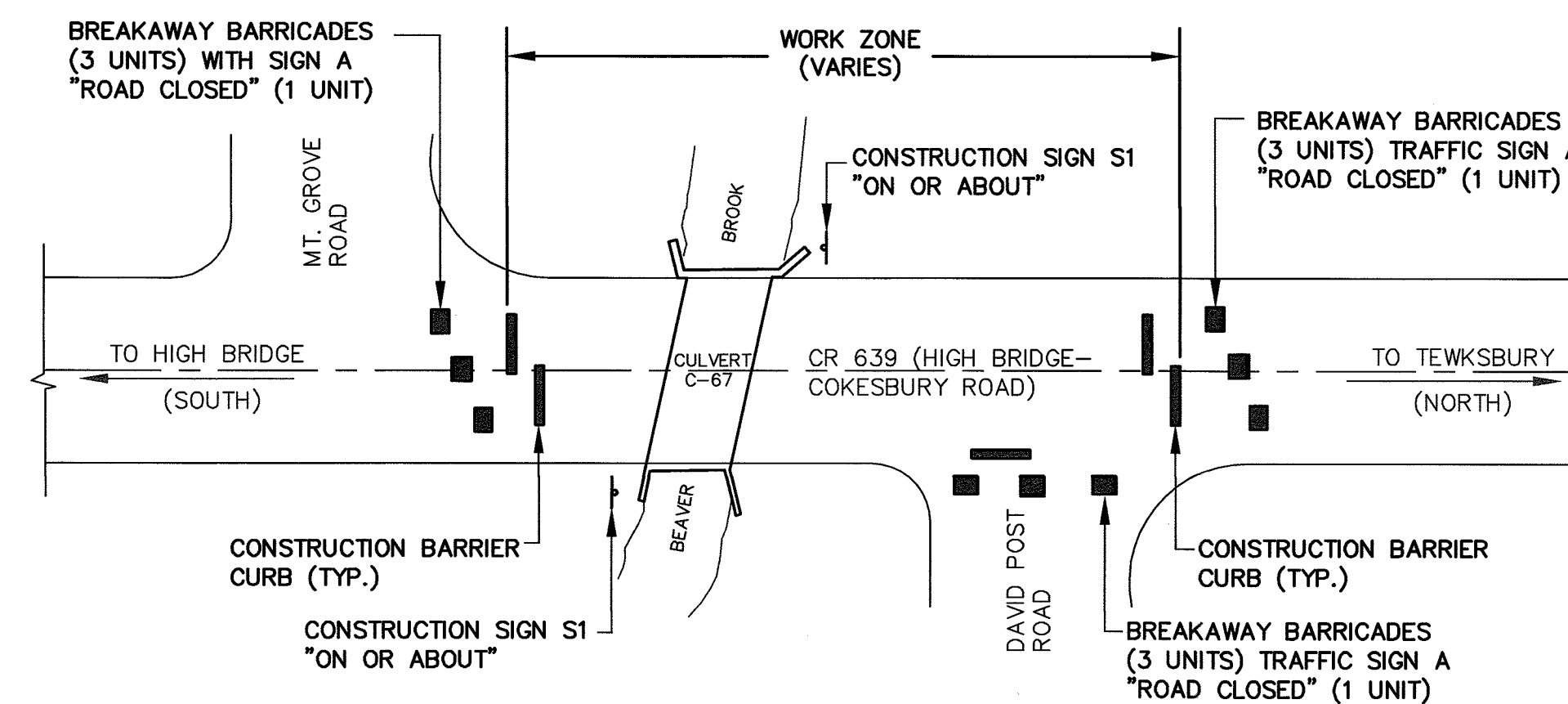


TYPE III BARRICADE - FRONT VIEW

NOTES:

- 1) THE 9" MIN. x 48", OR 12" MAX. x 48" BARRICADE RAILS SHALL BE FABRICATED FROM 0.125" MAX. PLASTIC SHEETING AND SHALL BE ATTACHED, 4 PER RAIL, WITH 1 INCH NO. 14 PAN HEAD METAL SCREWS OR PLASTIC RIVETS. ALL CORNERS SHALL BE ROUNDED.
- 2) ORANGE AND SILVER (WHITE) STRIPES SHALL BE RETROREFLECTIVE SHEETING, ASTM D 4956 TYPE III, AS SHOWN FOR CONSTRUCTION SIGNS. ALTERNATE ORANGE AND SILVER (WHITE) STRIPES 6" WIDE SLOPING DOWNWARD AT AN ANGLE OF 45 DEGREES IN THE DIRECTION TRAFFIC IS TO PASS.
- 3) THE FRAMING FOR BARRICADE PANELS SHALL BE NCHRP-350 CRASHED TESTED AND FHWA APPROVED.
- 4) IF NECESSARY, THE BALLAST SHALL BE FABRICATED AND PLACED ACCORDING TO THE MANUFACTURE'S RECOMMENDATION.

BREAKAWAY BARRICADE DETAIL
NOT TO SCALE



FULL ROADWAY CLOSURE DETAIL
NOT TO SCALE

COUNTY OF HUNTERDON OFFICE OF THE COUNTY ENGINEER PO BOX 2900 FLEMINGTON, NJ 08822-2900			
DETOUR PLAN			
RECONSTRUCTION OF CULVERT C-67 HIGH BRIDGE-COKESBURY ROAD (COUNTY ROUTE 639) CLINTON TOWNSHIP HUNTERDON COUNTY NEW JERSEY			
SCALE: AS SHOWN	DATE: MARCH 2018	DRAWN BY: BD & HW	ACAD FILE No: 004_C-67 DETOUR DETAILS
ASSISTANT COUNTY ENGINEER: <i>Eric T. Johnson</i> ERIC T. JOHNSON, N.J.P.E. No. 41750			4 20