

## About Teetertown Preserve

147 acres were originally acquired at Teetertown Preserve in the Hollow Brook ravine to protect one of the most significant natural areas in Hunterdon County. This section offers the solitude of a densely wooded area including hardwoods, shrubs, and animal life. It also showcases a spectacular rushing stream winding its way through dramatic rock outcroppings. In 1999, adjoining acres were purchased, adding large fields and two ponds and bringing the total to 305 acres. Diverse habitats encourage many different types of birds, including Tree and Barn Swallows, Eastern Bluebirds, and Indigo Buntings.

Adjacent to Teetertown is the 232-acre Crystal Springs Preserve. As its name implies, this preserve is an important source of water for NJ. Its five ponds represent the headwaters of the Spruce Run Creek.

Teetertown contains the highest elevation in Hunterdon County at 1,051 feet above sea level. This elevation is located in the section between Sharrer Rd. and Pleasant Grove Rd.

## Fishing & Hunting

The two ponds are excellent for bass and bluegill fishing (catch and release only). Trout fishing is permitted in Hollow Brook. The large pond is also stocked with Rainbow Trout. Fishermen must display an NJ Trout Stamp to keep trout, per season limits. **Hunting is by Division permit only. Please wear blaze orange during hunting season, or confine visits to Sundays after November 15.** There is no hunting from 5:00 PM on Fridays to 5:00 AM on Mondays through November 15.

The Hunterdon County Division of Parks & Recreation is dedicated to preserving open space and natural resources, providing safe parks and facilities, and offering educational and recreational opportunities, all contributing to an enhanced quality of life for present and future generations.

## Teetertown Preserve

The park is open from sunrise to sunset.

**Location:** *Teetertown Preserve is located in Lebanon Township. There are three parking areas along Pleasant Grove Road, and pull-offs for parking along Hollow Brook Road.*

Directions from the junction of Route 78 and Route 31 in Clinton:

### **To main parking area:**

Proceed north on Route 31 for 1.7 miles to Route 513 north. Turn right and follow Route 513 through High Bridge toward Califon for about 6.5 miles. Just past the Aquia in Califon, turn left onto Sliker Road and proceed about 1.6 miles to Pleasant Grove Road. Turn right and travel another 0.6 miles to the main driveway for Teetertown on the right-hand side, at 30 Pleasant Grove Road, Port Murray 07865 (the second entrance). The nature programs operate out of the stone house. For GPS, use 30 Pleasant Grove Road, Califon.

### **To Ravine Parking Area:**

Follow directions above onto Sliker Road. After about 1.3 miles on Sliker Road, turn right onto Teetertown Road. Follow the left fork of the road about 1 mile to the stop sign at Hollow Brook Road. Turn left and proceed 0.1 mile up the ravine. There are two single-vehicle pull-offs near the trailheads.

**Picnic Sites:** Non-reservable picnic areas are available on the shoreline of the large pond and along the road through the wooded area behind the barn.

**Camping:** Public and group campsites are available, by reservation only. All necessities must be carried in and out of public “wilderness” sites, a 1/2 to 3/4 mile hike from water and parking. Group lean-to and tent campsites are available, with adjacent permit parking. Portable restroom facilities are nearby to public and group campsites. The camping parking area is 20 Pleasant Grove Road (the third entrance). (Revised 2/2018)

## Trails Within the Preserve

All trails are clearly recognizable and are good for hiking, biking, or horseback riding, **except the Blue Trail which is for hiking only.**

**White Trail:** The 0.7 mile White Trail consists of old logging trails. The two ends of the trail are clearly defined with park signs along Hollow Brook Road. Portions of this trail parallel a stream and pass old rock walls.

**Red Trail:** This 1 mile trail winds through the upper portion of the ravine. About halfway, the trail enters a field (where it intersects with the **Pond Trail**). The trail parallels and then re-enters the woods. Campsites are along this trail.

**Blue Trail:** Starting from the red trail, this 0.6 mile trail crosses a stream, proceeds inside a small ravine, exits over a rock wall, and passes many wetland plants. The end of the trail follows along the top of the ravine with a splendid view of the valley. It turns and proceeds down a very steep hill to the road. Follow the road to the left to return to Hollow Brook Road and the ravine.

**Pond Trail:** This trail connects the Teetertown Ravine trails to the fields, ponds, and campsites of the Mountain Farm Section. The trail crosses a gently sloping hillside, passing through a field filled with beautiful seasonal wildflowers. Access to the group campsites is off the **Pond Trail’s** spur line.

**Old Orchard Trail:** This 0.6 mile trail winds around what was once a peach orchard. As you walk this path, notice the pile of rocks cleared from the field by farmers. Mullein, staghorn sumac, and multiflora rose are a few of the plants that have started to take over the field. The thickets along the fence are excellent places for birds to feed and find shelter. Bluebirds are often seen along this trail.

It is the policy of the County to provide reasonable accommodations to persons with disabilities upon advance notice of need. Persons requiring accommodations should make a request at least two weeks prior to program attendance.

# Teetertown Preserve

## Trail Map and Guide



Large pond with accessible fishing pier



Hunterdon County

### **Division of Parks & Recreation**

Mailing Address: PO Box 2900,  
Flemington, NJ 08822-2900

Office Location: 1020 State Route 31,  
Lebanon, NJ (Clinton Township)

Telephone: (908) 782-1158

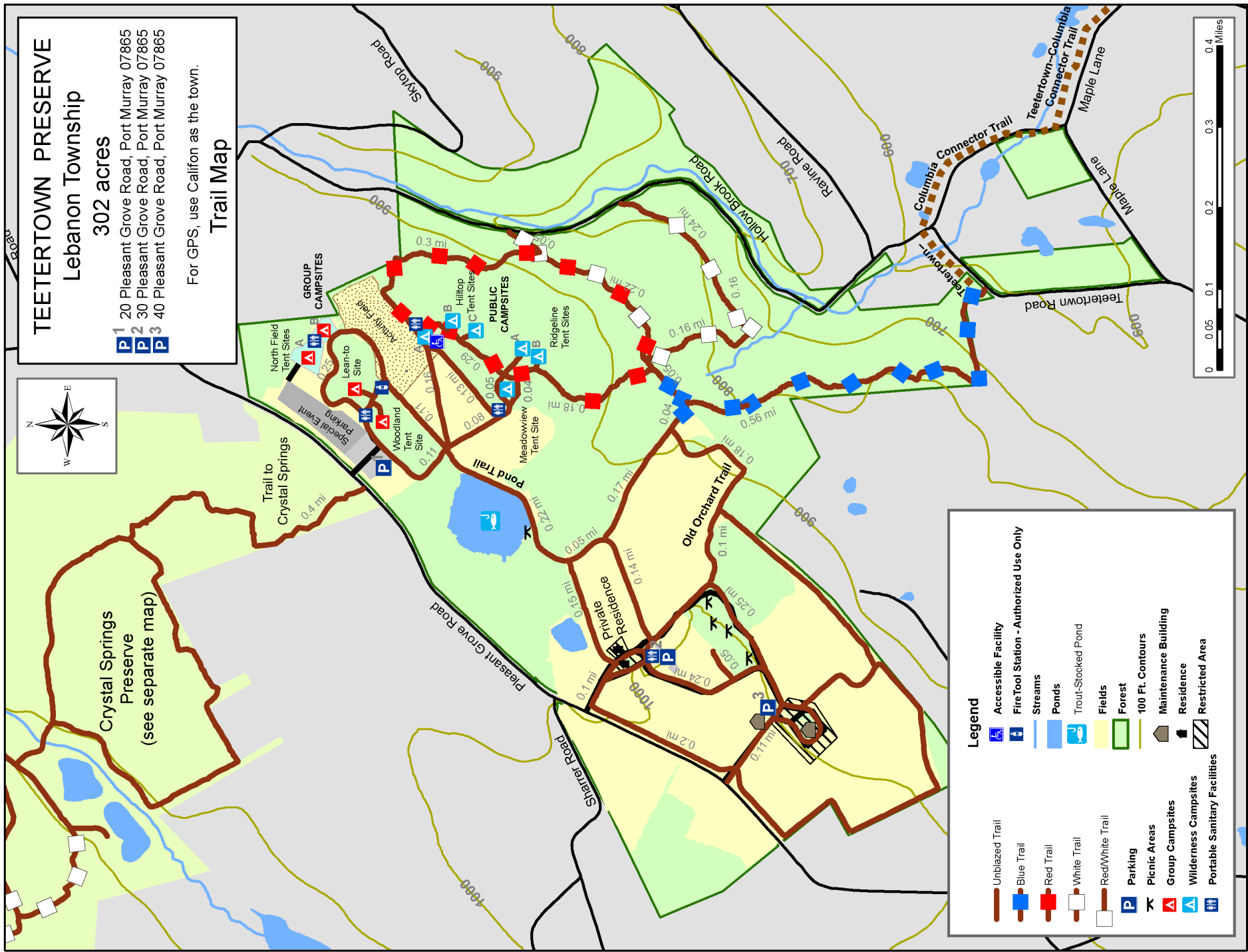
Fax: (908) 806-4057

E-mail: [parcs@co.hunterdon.nj.us](mailto:parcs@co.hunterdon.nj.us)

Website: [www.co.hunterdon.nj.us](http://www.co.hunterdon.nj.us)  
(click on “Parks & Recreation”)

Office Hours:

Monday to Friday 8:00 AM to 4:30 PM



**SUMMARY OF RULES AND REGULATIONS**

The rules and regulations governing use of facilities or properties administered by the Hunterdon County Division of Parks and Recreation are promulgated in accordance with provisions of the N.J. Statutes Title 40:32-7.12, which reads as follows:

"The Board of Chosen Freeholders may by resolution make, alter, amend, and repeal rules and regulations for the supervision, regulation and control of all activities carried on, conducted, sponsored, arranged, or provided for in connection with a public golf course or other county recreational, playground, or public entertainment facility, and for the protection of property, and may prescribe and enforce fines and penalties for the violation of any such rule or regulation."

**These rules and regulations** have been promulgated for the protection of our patrons and for the facilities and natural resources administered by the Hunterdon County Division of Parks and Recreation.

**Permits:** A fully executed Facility Use Permit, issued by the County of Hunterdon for any activity, shall authorize the activity only insofar as it may be performed in strict accordance with the terms and conditions thereof. The State of NJ, County of Hunterdon, or the local municipality may require additional permits.

**Prohibited Acts:** The violation of any Municipal, State, or Federal law. Advertising, solicitation, ice skating, ice fishing, any other on-ice activities, downhill skiing, bathing, fuel-powered modeled aircraft, the release of any animal, explosives of any kind, poisons of any kind, after-hours use, alcohol without a permit in a non-designated area, controlled dangerous substances, weapons, posting of signage, inappropriate attire, and climbing on, or rappelling from any cliff, rock face, or boulder, with, or without the use of specialized equipment.

**Regulated Activity:** The sale of merchandise, aviation, boating, cross-country skiing, bicycling, and sledding. Battery-powered modeled aircraft and horses must be in designated areas, dogs must be restrained with a leash not exceeding six feet, pet waste must be removed, camping/fires are by permit only. All groups of 15 or more must obtain a permit for use of any Park area.

**Prohibited Acts for the Protection of Property:** No person shall make, excavate on, destroy, paint, fill in, cut, remove or tamper with any property, organic or inorganic.

**Prohibited Acts for the Protection of Natural Resources:** No person shall disturb wildlife or vegetation in any manner. No person shall pollute waters, litter, dump debris, or release helium balloons in any property. It is illegal to remove any natural resource from, or introduce any plant material, bulbs, or seeds to any property without a proper permit or license.

**Prohibited Acts for the Protection of People:** No person shall obstruct a county employee/official, interfere with a visitor, conduct any unsafe act, or cause a hazardous condition.

**Vehicles:** All the provisions of the NJ State Motor Vehicle Act apply. Vehicles are not allowed in unauthorized areas. Parking is allowed in designated areas only. **ATVs, dirt bikes, and snowmobiles are prohibited on County Park lands.**

**Enforcement:** The rules and regulations of the County shall be enforced by duly authorized Rangers or representatives of the County under the provision of N.J.S.A. 40:32-2, thru 40:32-7.13. Any person who enters into a County Park for any purpose whatsoever has a duty and is presumed to be aware of the provisions of these rules and regulations governing the use of the facilities and properties administered by the Hunterdon County Division of Parks & Recreation.

**Penalties:** Any person violating any of the provisions of these regulations shall, upon conviction before a court or other adjudicative body of jurisdiction, be liable for the replacement, repair or restoration of damaged property, if any, and shall pay a penalty of not more than one thousand dollars (\$1,000.00) or other amount in the discretion of the court or other adjudicative body, or may be sentenced to imprisonment in the County jail for the term not exceeding ninety (90) days, or both, provided that this section shall not supersede any applicable penalty provision for specific offenses, which may be set forth in the New Jersey Code of Criminal Justice, N.J.S.A. 2C:1-1, et seq., or in any other applicable state or federal law.

**NOTE:** County Park Rangers of the Division of Parks and Recreation have the authority to issue summons and make arrests for violations of rules and regulations governing the use of facilities and properties administered by the Division of Parks and Recreation. This is only a summary of the rules and regulations. Rules applying to special conditions, activities, or situations may be supplemental to these rules and regulations. When special rules apply, they will be posted at affected areas. The complete text of regulations is available for inspection at the Park administration office in Clinton Township during regular business hours.