

## About Stanton Station Section

The Stanton Station Section is named after the passenger and freight train station that was once located a short distance away. Passenger service at the station was discontinued in the late 1930s and the station was abandoned. The building was purchased in 1943 by Robert and Hermia Lechner for \$75 and transported to Echo Hill for use as a dining hall for their summer camp. The 1880 bridge near the parking area is one of the earliest metal truss bridges in Hunterdon County. It is unique because of its trussed floor beams that mirror the configuration above.

The County acquired most of this land in 1975 as part of the South Branch Reservation. Today, the reservation totals over 1000 acres. Besides providing recreational opportunities, the reservation helps preserve the watershed along the South Branch of the Raritan River.



*Belted Kingfisher*

(Revised 5/2017)

The Hunterdon County Division of Parks & Recreation is dedicated to preserving open space and natural resources, providing safe parks and facilities, and offering educational and recreational opportunities, all contributing to an enhanced quality of life for present and future generations.

## Stanton Station Section

**Location:** The Stanton Station Section is located at 30 Stanton Station Road, Flemington 08822 (Raritan Township). The park is open from sunrise to sunset. *No restroom facilities are available.*

**Directions from the Flemington Area:** Take Route 31 north about 5.6 miles from the Flemington Circle. Make a right onto the jug handle for Stanton Station Road. The parking lot is 1/2 mile on the left-hand side, just after the bridge.

**Directions from the Clinton Area:** Take Route 31 south about 6.2 miles from Interstate 78 to the traffic light for Stanton Station Road. Turn right onto Stanton Station Road. The parking area is 1/2 mile on the left-hand side, just after the bridge.

### Fishing

Adjacent to the South Branch of the Raritan River, Stanton Station offers access to the river's edge for fishing. The river is stocked with Rainbow, Brook, and Brown Trout. A state fishing license must be displayed.

### Hunting

In order to control the population of deer on park property, hunting is permitted. Hunters must obtain a special permit issued by the Division to be able to hunt on the preserve. Visitors during hunting season are strongly encouraged to wear blaze orange or confine visits to Sundays.

It is the policy of the County to provide reasonable accommodations to persons with disabilities upon advance notice of need. Persons requiring accommodations should make a request at least two weeks prior to program attendance.

## Trail System

Stanton Station offer a moderate trail that runs parallel with the South Branch of the Raritan River. Several scenic views overlooking the river exist along the trail system. A side trail branches off near the railroad trestle and offers access to Old Clinton Road. These trails are open to hiking, mountain biking, and horseback riding.

### Nearby Parks

**Echo Hill Park:** Located on Lilac Drive, this site offers a mile loop trail, playground, and a fishing pond. Special events and nature programs are held here and two meeting rooms are available by reservation.

**Sunnyside Picnic and Memorial Area:** Offers picnic sites and a fisherman's trail along the South Branch of the Raritan River. Also located within the park is a memorial area dedicated to the County residents who lost their lives in the September 11th attack on the World Trade Center.

**Wings Section:** Located on Deer Path Road, this section offers hiking trails and fishing access.

See the guides for these locations for more information about these parks.



*Rainbow Trout*

With the exception of park properties with reservable facilities, all properties are "carry in / carry out" and trash/recycling receptacles are not provided. Please plan accordingly and do not leave any trash/recyclables behind.

# Stanton Station Section of the South Branch Reservation Trail Map and Guide



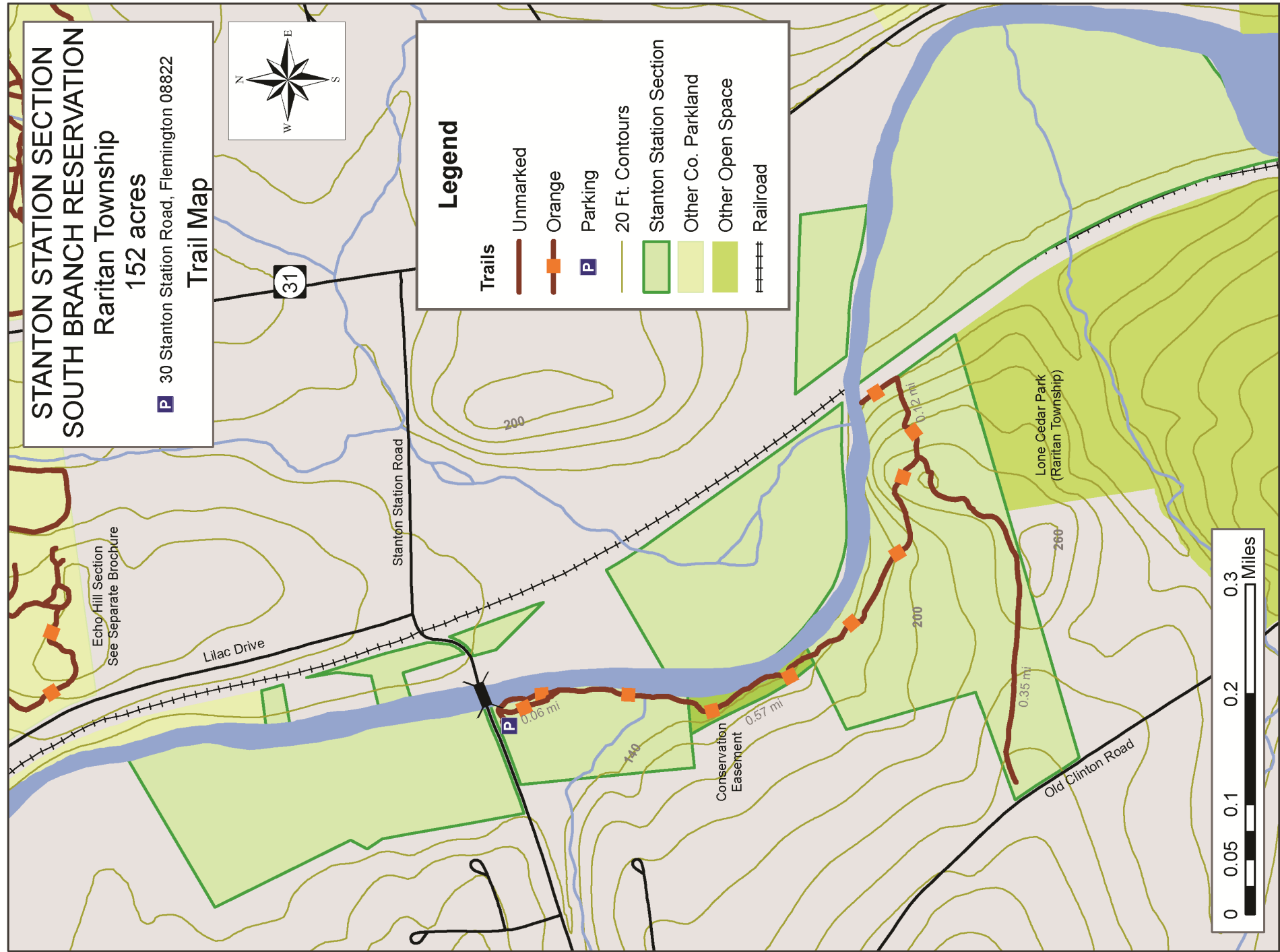
*Stanton Station, circa 1900*



Hunterdon County  
**Division of Parks & Recreation**  
PO Box 2900, Flemington, NJ 08822-2900  
1020 State Route 31, Lebanon, NJ 08833  
Telephone (908) 782-1158  
Fax (908) 806-4057

E-mail: [parks@co.hunterdon.nj.us](mailto:parks@co.hunterdon.nj.us)  
Website: [www.co.hunterdon.nj.us](http://www.co.hunterdon.nj.us)  
(click on "Parks & Recreation")

*Office Hours:*  
*Monday to Friday 8:00 AM to 4:30 PM*



**SUMMARY OF RULES AND REGULATIONS**

The rules and regulations governing use of facilities or properties administered by the Hunterdon County Division of Parks and Recreation are promulgated in accordance with provisions of the N.J. Statutes Title 40:32-7.12, which reads as follows:

"The Board of Chosen Freeholders may by resolution make, alter, amend, and repeal rules and regulations for the supervision, regulation and control of all activities carried on, conducted, sponsored, arranged, or provided for in connection with a public golf course or other county recreational, playground, or public entertainment facility, and for the protection of property, and may prescribe and enforce fines and penalties for the violation of any such rule or regulation."

**These rules and regulations** have been promulgated for the protection of our patrons and for the facilities and natural resources administered by the Hunterdon County Division of Parks and Recreation.

**Permits:** A fully executed Facility Use Permit, issued by the County of Hunterdon for any activity, shall authorize the activity only insofar as it may be performed in strict accordance with the terms and conditions thereof. The State of NJ, County of Hunterdon, or the local municipality may require additional permits.

**Prohibited Acts:** The violation of any Municipal, State, or Federal law. Advertising, solicitation, ice skating, ice fishing, any other on-ice activities, downhill skiing, bathing, fuel-powered modeled aircraft, the release of any animal, explosives of any kind, poisons of any kind, after-hours use, alcohol without a permit in a non-designated area, controlled dangerous substances, weapons, posting of signage, inappropriate attire, and climbing on, or rappelling from any cliff, rock face, or boulder, with, or without the use of specialized equipment.

**Regulated Activity:** The sale of merchandise, aviation, boating, cross-country skiing, bicycling, and sledding. Battery-powered modeled aircraft and horses must be in designated areas, dogs must be restrained with a leash not exceeding six feet, pet waste must be removed, camping/fires are by permit only. All groups of 15 or more must obtain a permit for use of any Park area.

**Prohibited Acts for the Protection of Property:** No person shall make, excavate on, destroy, paint, fill in, cut, remove or tamper with any property, organic or inorganic.

**Prohibited Acts for the Protection of Natural Resources:** No person shall disturb wildlife or vegetation in any manner. No person shall pollute waters, litter, dump debris, or release helium balloons in any property. It is illegal to remove any natural resource from, or introduce any plant material, bulbs, or seeds to any property without a proper permit or license.

**Prohibited Acts for the Protection of People:** No person shall obstruct a county employee/official, interfere with a visitor, conduct any unsafe act, or cause a hazardous condition.

**Vehicles:** All the provisions of the NJ State Motor Vehicle Act apply. Vehicles are not allowed in unauthorized areas. Parking is allowed in designated areas only. **ATVs, dirt bikes, and snowmobiles are prohibited on County Park lands.**

**Enforcement:** The rules and regulations of the County shall be enforced by duly authorized Rangers or representatives of the County under the provision of N.J.S.A. 40:32-2, thru 40:32-7.13. Any person who enters into a County Park for any purpose whatsoever has a duty and is presumed to be aware of the provisions of these rules and regulations governing the use of the facilities and properties administered by the Hunterdon County Division of Parks & Recreation.

**Penalties:** Any person violating any of the provisions of these regulations shall, upon conviction before a court or other adjudicative body of jurisdiction, be liable for the replacement, repair or restoration of damaged property, if any, and shall pay a penalty of not more than one thousand dollars (\$1,000.00) or other amount in the discretion of the court or other adjudicative body, or may be sentenced to imprisonment in the County jail for the term not exceeding ninety (90) days, or both, provided that this section shall not supersede any applicable penalty provision for specific offenses, which may be set forth in the New Jersey Code of Criminal Justice, N.J.S.A. 2C:1-1, et seq., or in any other applicable state or federal law.

**NOTE:** County Park Rangers of the Division of Parks and Recreation have the authority to issue summons and make arrests for violations of rules and regulations governing the use of facilities and properties administered by the Division of Parks and Recreation. This is only a summary of the rules and regulations. Rules applying to special conditions, activities, or situations may be supplemental to these rules and regulations. When special rules apply, they will be posted at affected areas. The complete text of regulations is available for inspection at the Park administration office in Clinton Township during regular business hours.