

## About Sourland Mountain Preserve

The name “Sourlands” is derived from the fact that early settlers found the rocky soils difficult to farm. The limited supply of groundwater saved the forest from destruction by developers. Its woodlands shelter a very rich and diverse native plant community.

The park’s 364 acres are comprised of a deciduous forest with a swamp surrounded by two streams. Formed almost 200 million years ago, the rocks of the Sourlands, called diabase or “trap rock,” were used to produce railroad ballast, concrete aggregate, and Belgian blocks for road beds. Evidence from quarrying can still be found embedded along the fissures of some boulders.

The Sourland Mountains are also steeped in mysticism and history. Some say compasses do not work in these hills; others say the mountains are haunted. John Hart, a signer of the Declaration of Independence, hid in these hills during the Revolution. The Lindbergh Estate, the site of the famous baby kidnapping/murder, is near the property.



Gray Treefrog

(Revised 5/2017)

The Hunterdon County Division of Parks & Recreation is dedicated to preserving open space and natural resources, providing safe parks and facilities, and offering educational and recreational opportunities, all contributing to an enhanced quality of life for present and future generations.

## Sourland Mountain Preserve

**Location:** Sourland Mountain is located in East Amwell Township, in the southeastern section of Hunterdon County. There is a small parking area at 233 Rileyville Road, Ringoes 08551. *Please note: No restrooms facilities are available.*

**Directions from the Flemington Area:** Take Route 202/31 south from the Flemington Circle for 5 miles to the jug handle for Wertsville Road (Route 602). Use the traffic light to cross over Route 202/31. Continue on Wertsville Road for 3.3 miles to Rileyville Road (Route 607). Turn right onto Rileyville; go 1.7 miles. The park entrance is on the left and is marked by a Green Acres sign as well as a County Park sign. The entrance is shared by two other driveways; continue up the center driveway to the small parking area. Do not block the gated access road.

**Directions from the Lambertville Area:** Take Route 202 North for about 6 miles to Ringoes. Turn right onto Wertsville Road (Route 602), and follow the directions above.

## Recreational Opportunities

This park offers easy hiking and cross-country skiing. For mountain biking, the terrain is flat but rocky. **Horseback riding and rock climbing are prohibited in the preserve.**

## Hunting

Hunting is allowed in the park to control deer numbers. Hunters must obtain a special permit from the Division. During hunting season, visitors to the park are encouraged to wear blaze orange or confine their visits to Sundays.

It is the policy of the County to provide reasonable accommodations to persons with disabilities upon advance notice of need. Persons requiring accommodations should make a request at least two weeks prior to program attendance.

## Trail Information

**Main Trail:** The main trail in Sourland Mountain Preserve is very wide and flat, with a short uphill slope at the end. The trail winds through a beautiful deciduous forest, strewn with large boulders. Along this trail is a floodplain with a rich diversity of aquatic life.

**Yellow Trail:** This trail branches off the Main Trail, about a quarter of a mile from the parking area. It can be a very wet trail and crosses a small stream where hikers must rock hop. In spring, many wildflowers can be found along this trail.

**White Trail:** This trail connects the end of the Main Trail with the Yellow Trail. It traverses a few rocky areas and can be very wet in spring or after rains.

**Blue Trail:** This trail branches off the Service Road Trail and connects to Ridge Road. It climbs through the boulder area and crosses one of the creeks. The creek crossing may be impassable during the wet spring season. This trail also uses a D&R Trail easement. Please follow the established trail.

## Sourlands Ecosystem Preserve

Sourlands Ecosystem Preserve (formerly called Stony Brook North) is public open space that is owned and managed by the D&R Greenway Land Trust, a non-profit organization dedicated to preserving habitat along the Sourland Ridge. The trail network covers more than eight miles of forest following the headwaters of the Stony Brook. Only recreational hiking is permitted within this park. For more information on Sourlands Ecosystem Preserve or the D&R Greenway, contact them at (609) 924-4646 or visit their website [www.drgreenway.org](http://www.drgreenway.org).

With the exception of park properties with reservable facilities, all properties are “carry in / carry out” and trash/recycling receptacles are not provided. Please plan accordingly and do not leave any trash/recyclables behind.

# Sourland Mountain Preserve

## Trail Map and Guide



Spotted Salamanders



Hunterdon County

**Division of Parks and Recreation**

PO Box 2900, Flemington, NJ 08822-2900

1020 State Route 31, Lebanon, NJ 08833

Telephone (908) 782-1158

Fax (908) 806-4057

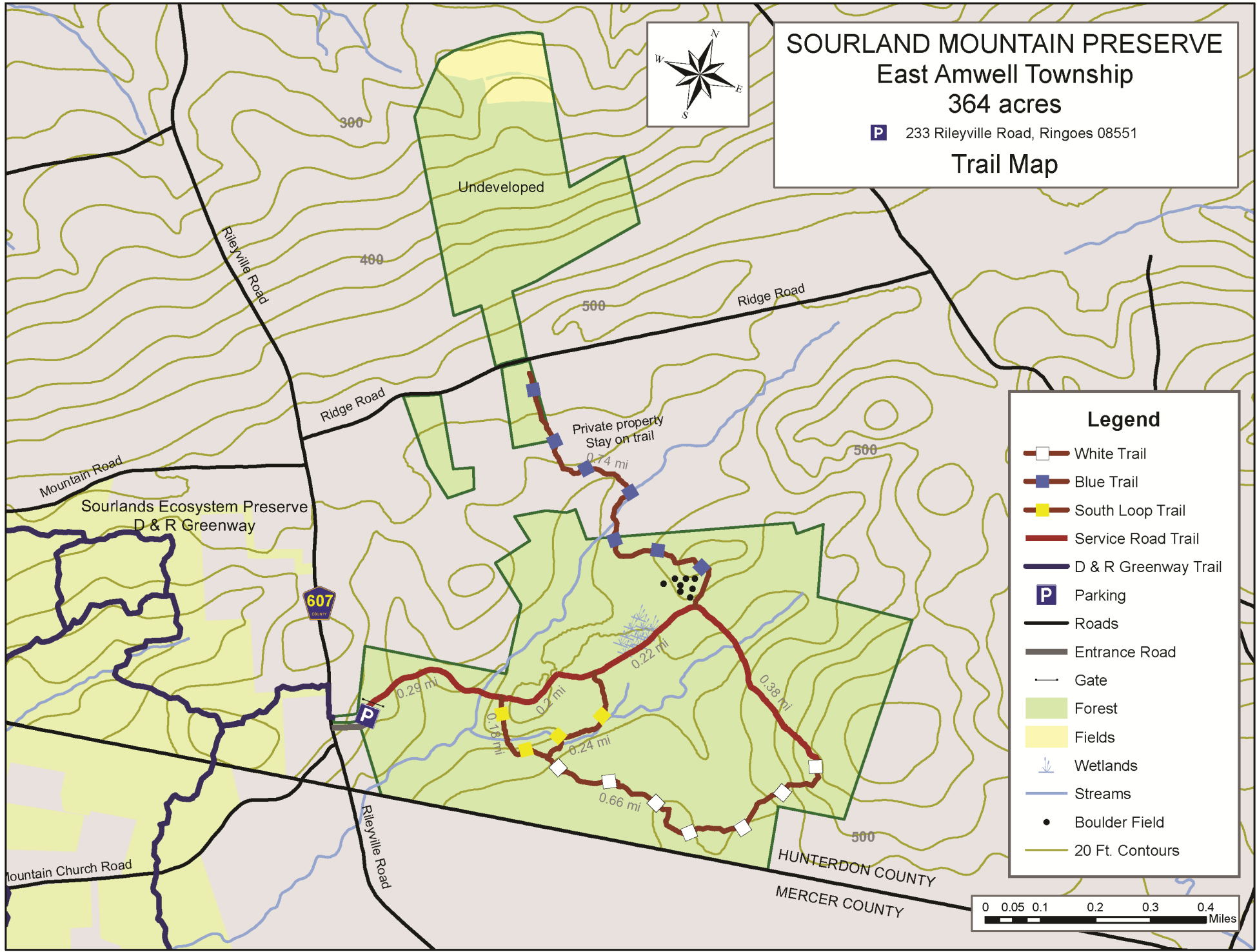
E-mail: [parks@co.hunterdon.nj.us](mailto:parks@co.hunterdon.nj.us)

Website: [www.co.hunterdon.nj.us](http://www.co.hunterdon.nj.us)

(click on “Parks & Recreation”)

*Office Hours:*

*Monday to Friday 8:00 AM to 4:30 PM*



**SOURLAND MOUNTAIN PRESERVE**  
**East Amwell Township**  
**364 acres**  
 P 233 Rileyville Road, Ringoes 08551  
**Trail Map**

**Legend**

- White Trail
- Blue Trail
- South Loop Trail
- Service Road Trail
- D & R Greenway Trail
- Parking
- Roads
- Entrance Road
- Gate
- Forest
- Fields
- Wetlands
- Streams
- Boulder Field
- 20 Ft. Contours

**SUMMARY OF RULES AND REGULATIONS**

The rules and regulations governing use of facilities or properties administered by the Hunterdon County Division of Parks and Recreation are promulgated in accordance with provisions of the N.J. Statutes Title 40:32-7.12, which reads as follows:

"The Board of Chosen Freeholders may by resolution make, alter, amend, and repeal rules and regulations for the supervision, regulation and control of all activities carried on, conducted, sponsored, arranged, or provided for in connection with a public golf course or other county recreational, playground, or public entertainment facility, and for the protection of property, and may prescribe and enforce fines and penalties for the violation of any such rule or regulation."

**These rules and regulations** have been promulgated for the protection of our patrons and for the facilities and natural resources administered by the Hunterdon County Division of Parks and Recreation.

**Permits:** A fully executed Facility Use Permit, issued by the County of Hunterdon for any activity, shall authorize the activity only insofar as it may be performed in strict accordance with the terms and conditions thereof. The State of NJ, County of Hunterdon, or the local municipality may require additional permits.

**Prohibited Acts:** The violation of any Municipal, State, or Federal law. Advertising, solicitation, ice skating, ice fishing, any other on-ice activities, downhill skiing, bathing, fuel-powered modeled aircraft, the release of any animal, explosives of any kind, poisons of any kind, after-hours use, alcohol without a permit in a non-designated area, controlled dangerous substances, weapons, posting of signage, inappropriate attire, and climbing on, or rappelling from any cliff, rock face, or boulder, with, or without the use of specialized equipment.

**Regulated Activity:** The sale of merchandise, aviation, boating, cross-country skiing, bicycling, and sledding. Battery-powered modeled aircraft and horses must be in designated areas, dogs must be restrained with a leash not exceeding six feet, pet waste must be removed, camping/fires are by permit only. All groups of 15 or more must obtain a permit for use of any Park area.

**Prohibited Acts for the Protection of Property:** No person shall make, excavate on, destroy, paint, fill in, cut, remove or tamper with any property, organic or inorganic.

**Prohibited Acts for the Protection of Natural Resources:** No person shall disturb wildlife or vegetation in any manner. No person shall pollute waters, litter, dump debris, or release helium balloons in any property. It is illegal to remove any natural resource from, or introduce any plant material, bulbs, or seeds to any property without a proper permit or license.

**Prohibited Acts for the Protection of People:** No person shall obstruct a county employee/official, interfere with a visitor, conduct any unsafe act, or cause a hazardous condition.

**Vehicles:** All the provisions of the NJ State Motor Vehicle Act apply. Vehicles are not allowed in unauthorized areas. Parking is allowed in designated areas only. **ATVs, dirt bikes, and snowmobiles are prohibited on County Park lands.**

**Enforcement:** The rules and regulations of the County shall be enforced by duly authorized Rangers or representatives of the County under the provision of N.J.S.A. 40:32-2, thru 40:32-7.13. Any person who enters into a County Park for any purpose whatsoever has a duty and is presumed to be aware of the provisions of these rules and regulations governing the use of the facilities and properties administered by the Hunterdon County Division of Parks & Recreation.

**Penalties:** Any person violating any of the provisions of these regulations shall, upon conviction before a court or other adjudicative body of jurisdiction, be liable for the replacement, repair or restoration of damaged property, if any, and shall pay a penalty of not more than one thousand dollars (\$1,000.00) or other amount in the discretion of the court or other adjudicative body, or may be sentenced to imprisonment in the County jail for the term not exceeding ninety (90) days, or both, provided that this section shall not supersede any applicable penalty provision for specific offenses, which may be set forth in the New Jersey Code of Criminal Justice, N.J.S.A. 2C:1-1, et seq., or in any other applicable state or federal law.

**NOTE:** County Park Rangers of the Division of Parks and Recreation have the authority to issue summons and make arrests for violations of rules and regulations governing the use of facilities and properties administered by the Division of Parks and Recreation. This is only a summary of the rules and regulations. Rules applying to special conditions, activities, or situations may be supplemental to these rules and regulations. When special rules apply, they will be posted at affected areas. The complete text of regulations is available for inspection at the Park administration office in Clinton Township during regular business hours.