

## About the Musconetcong Mountain Preserve

Foundations on the property are of an 1830-1840 stone dwelling and a circa 1860 bank barn. The house originally had two rooms downstairs and two upstairs, and the square barn was used to store hay and house chickens, cows, and horses. In 1860, the farm was owned by Jacob Cole. In 2005, James Entwhistle was the owner, and a tenant resided in the house. Although the larger structures have since fallen down, two springhouses still stand in the preserve. These buildings would have kept milk in tin containers cool using running water, and also provided a source of drinking water for people and livestock.

Before the County acquired the original 102 acres, this property was slated to become a housing development, and the main trail was the original lane. The property lies within the New Jersey Highlands Region. As such, development on the land became subject to the requirements of the 2004 Highlands Water Protection and Planning Act. This was a factor in the owner's decision to eventually sell the land to the County in 2006. In 2015, 125 additional acres were acquired, which allowed for the current road access and parking lot. Trails were established during volunteer events in 2016.

## Hunting

In order to control the population of deer on park property, hunting is permitted. Hunters must obtain a special permit issued by the Division to hunt in a park. Visitors during hunting season are strongly encouraged to wear blaze orange or confine visits to Sundays.

## Musconetcong Mountain Preserve

**Location:** The Musconetcong Mountain Preserve is located in Holland Township at 275 Ellis Road, Milford 08848. The park is open from sunrise to sunset. There are no restroom facilities.

**Directions from the Clinton Area:** Take Route 78 west to exit 11. Use the jughandle and the second exit of the circle to cross over Route 78 and proceed west on Route 614 (Little York - Pattenburg Road) for about 5 miles to Little York. At the intersection in Little York (where 614 turns left), proceed straight across onto Ellis Road. Continue about 1.3 miles, and look for a double driveway with the brown park sign on the left. The park is the driveway on the right.

**Directions from the Stockton Area:** Proceed north on Route 519 until the junction with Route 631. Proceed straight onto Route 631 until the junction with Route 614. Turn right onto Route 614 and drive through Little York. Turn left onto Ellis Road when Route 614 bears sharply to the right. Proceed about 1.3 miles, and look for a double driveway with the brown park sign on the left. The park is the driveway on the right.

(Revised 1/2018)

With the exception of park properties with reservable facilities, all properties are "carry in / carry out" and trash/recycling receptacles are not provided. Please plan accordingly and do not leave any trash/recyclables behind.

It is the policy of the County to provide reasonable accommodations to persons with disabilities upon advance notice of need. Persons requiring accommodations should make a request at least two weeks prior to program attendance.

## Recreational Opportunities

Much of the trail system of the Musconetcong Mountain Preserve consists of old roads remaining from when the area was being considered for development. Most of the trails are several feet wide and are very easy to hike or bike, but there is an uphill slope on the return to the parking area. Cross-country skiing is not recommended due to the sloped terrain. Although horse back riding is permitted within this park, no parking is available for trailers. The trail system connects with that of Holland Township Park. To find out more, contact Riegel Ridge at 995-9260 or visit [www.riegelridgecc.org](http://www.riegelridgecc.org).

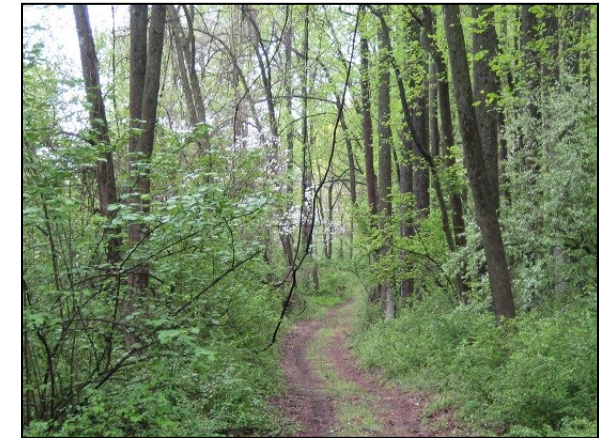
## About the Habitat

This preserve is located on the southern slope of the Musconetcong Ridge and is part of the Highlands Region of the state. The stream in the property drains into the Delaware River. The forest is an open oak-hickory canopy, except for a section that was planted with evergreens. Edge species have also pushed into the park's interior, so expect to see birds such as Northern Cardinals and Gray Catbirds. One can also expect some visitation from the spring migrants and a few woodland breeders, such as Baltimore Orioles and Eastern Towhees. A small pond on the short blue trail and wetlands around the springhouses provide breeding areas for amphibians. Rock walls in the park offer shelter for small animals like rodents and snakes.

The Hunterdon County Division of Parks & Recreation is dedicated to preserving open space and natural resources, providing safe parks and facilities, and offering educational and recreational opportunities, all contributing to an enhanced quality of life for present and future generations.

# Musconetcong Mountain Preserve

## Trail Map & Guide



Trail at Musconetcong Mountain



Hunterdon County  
**Division of Parks & Recreation**  
Mailing Address: PO Box 2900,  
Flemington, NJ 08822-2900  
Office Location: 1020 State Route 31,  
Lebanon, NJ (Clinton Township)  
Telephone: (908) 782-1158  
Fax: (908) 806-4057

E-mail: [parks@co.hunterdon.nj.us](mailto:parks@co.hunterdon.nj.us)  
Website: [www.co.hunterdon.nj.us](http://www.co.hunterdon.nj.us)  
(click on "Parks & Recreation")

*Office Hours:*  
*Monday to Friday 8:00 AM to 4:30 PM*

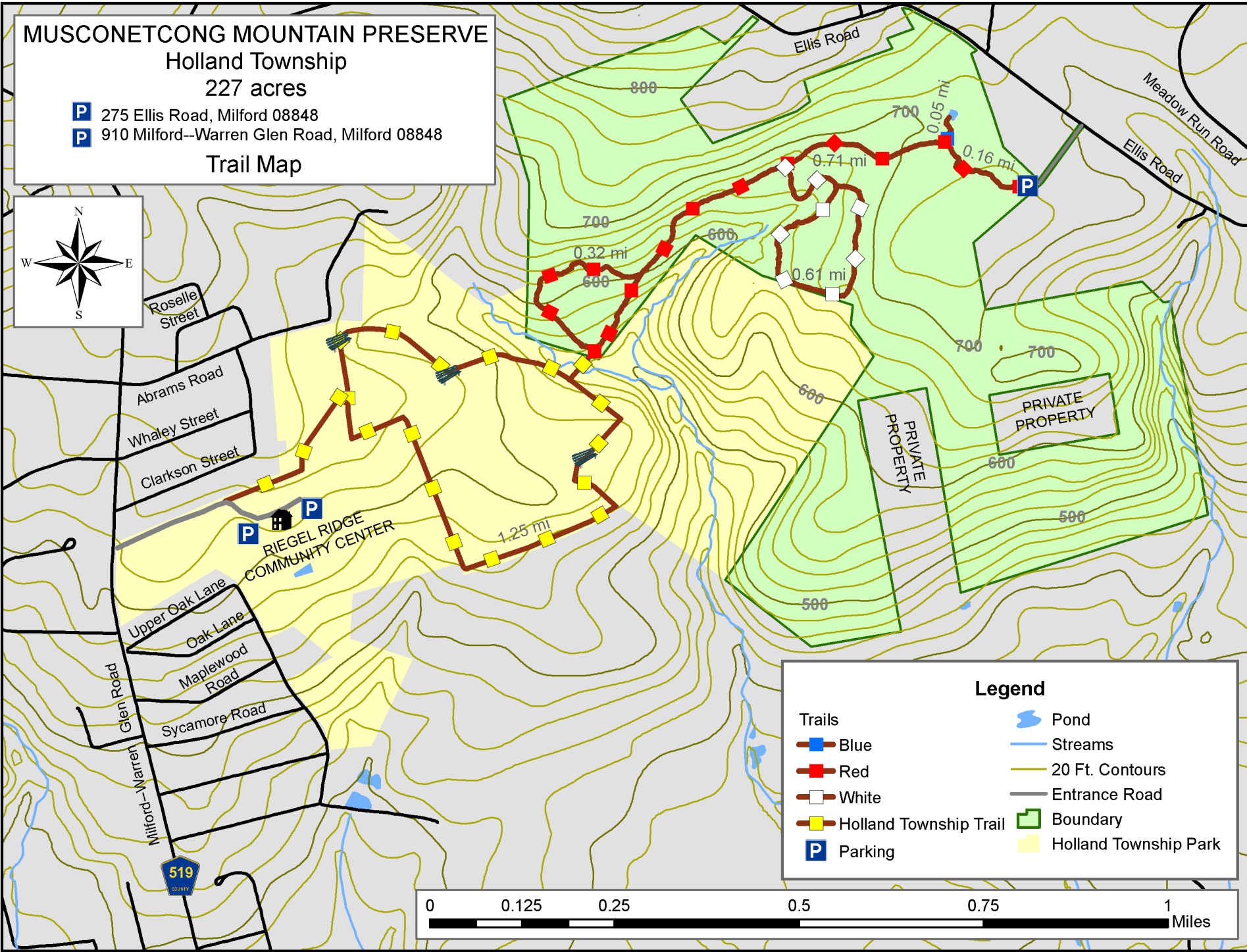
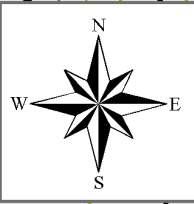
# MUSCONETCONG MOUNTAIN PRESERVE

Holland Township

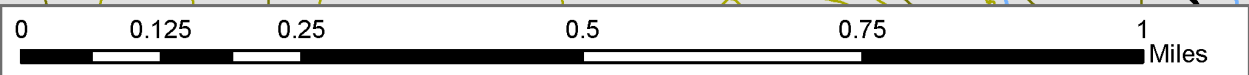
227 acres

- P** 275 Ellis Road, Milford 08848
- P** 910 Milford--Warren Glen Road, Milford 08848

## Trail Map



Legend	
Blue	Pond
Red	Streams
White	20 Ft. Contours
Holland Township Trail	Entrance Road
Parking	Boundary
	Holland Township Park



### SUMMARY OF RULES AND REGULATIONS

The rules and regulations governing use of facilities or properties administered by the Hunterdon County Division of Parks and Recreation are promulgated in accordance with provisions of the N.J. Statutes Title 40:32-7.12, which reads as follows:

"The Board of Chosen Freeholders may by resolution make, alter, amend, and repeal rules and regulations for the supervision, regulation and control of all activities carried on, conducted, sponsored, arranged, or provided for in connection with a public golf course or other county recreational, playground, or public entertainment facility, and for the protection of property, and may prescribe and enforce fines and penalties for the violation of any such rule or regulation."

**These rules and regulations** have been promulgated for the protection of our patrons and for the facilities and natural resources administered by the Hunterdon County Division of Parks and Recreation.

**Permits:** A fully executed Facility Use Permit, issued by the County of Hunterdon for any activity, shall authorize the activity only insofar as it may be performed in strict accordance with the terms and conditions thereof. The State of NJ, County of Hunterdon, or the local municipality may require additional permits.

**Prohibited Acts:** The violation of any Municipal, State, or Federal law. Advertising, solicitation, ice skating, ice fishing, any other on-ice activities, downhill skiing, bathing, fuel-powered modeled aircraft, the release of any animal, explosives of any kind, poisons of any kind, after-hours use, alcohol without a permit in a non-designated area, controlled dangerous substances, weapons, posting of signage, inappropriate attire, and climbing on, or rappelling from any cliff, rock face, or boulder, with, or without the use of specialized equipment.

**Regulated Activity:** The sale of merchandise, aviation, boating, cross-country skiing, bicycling, and sledding. Battery-powered modeled aircraft and horses must be in designated areas, dogs must be restrained with a leash not exceeding six feet, pet waste must be removed, camping/fires are by permit only. All groups of 15 or more must obtain a permit for use of any Park area.

**Prohibited Acts for the Protection of Property:** No person shall make, excavate on, destroy, paint, fill in, cut, remove or tamper with any property, organic or inorganic.

**Prohibited Acts for the Protection of Natural Resources:** No person shall disturb wildlife or vegetation in any manner. No person shall pollute waters, litter, dump debris, or release helium balloons in any property. It is illegal to remove any natural resource from, or introduce any plant material, bulbs, or seeds to any property without a proper permit or license.

**Prohibited Acts for the Protection of People:** No person shall obstruct a county employee/official, interfere with a visitor, conduct any unsafe act, or cause a hazardous condition.

**Vehicles:** All the provisions of the NJ State Motor Vehicle Act apply. Vehicles are not allowed in unauthorized areas. Parking is allowed in designated areas only. **ATVs, dirt bikes, and snowmobiles are prohibited on County Park lands.**

**Enforcement:** The rules and regulations of the County shall be enforced by duly authorized Rangers or representatives of the County under the provision of N.J.S.A. 40:32-2, thru 40:32-7.13. Any person who enters into a County Park for any purpose whatsoever has a duty and is presumed to be aware of the provisions of these rules and regulations governing the use of the facilities and properties administered by the Hunterdon County Division of Parks & Recreation.

**Penalties:** Any person violating any of the provisions of these regulations shall, upon conviction before a court or other adjudicative body of jurisdiction, be liable for the replacement, repair or restoration of damaged property, if any, and shall pay a penalty of not more than one thousand dollars (\$1,000.00) or other amount in the discretion of the court or other adjudicative body, or may be sentenced to imprisonment in the County jail for the term not exceeding ninety (90) days, or both, provided that this section shall not supersede any applicable penalty provision for specific offenses, which may be set forth in the New Jersey Code of Criminal Justice, N.J.S.A. 2C:1-1, et seq., or in any other applicable state or federal law.

**NOTE:** County Park Rangers of the Division of Parks and Recreation have the authority to issue summons and make arrests for violations of rules and regulations governing the use of facilities and properties administered by the Division of Parks and Recreation. This is only a summary of the rules and regulations. Rules applying to special conditions, activities, or situations may be supplemental to these rules and regulations. When special rules apply, they will be posted at affected areas. The complete text of regulations is available for inspection at the Park administration office in Clinton Township during regular business hours.