

## About Jugtown Mountain

This 262-acre nature preserve is located on the ridge of the Musconetcong Mountain near West Portal. Jugtown traces its name to the rock ledges where moonshiners hid their jugs to avoid government authorities during Prohibition. This site, known as Swayze Mine after landowner William Swayze, was one of the 41 known mines in the county in the 1800s, and one of the main producers of magnetite ore. Operating from 1868 until 1889 under the direction of the West End Iron Company, the mine yielded 16,000 tons of ore a year and employed 380 immigrant workers at its peak. The deepest shaft had a depth of 75 feet and was reached by a tramway. The mine was briefly reopened for four years in 1939 by West Portal Mines, Inc. They excavated an estimated 253,000 tons of ore annually and employed 250 men. Today, remnants of ore dumps, rock pits, and concrete structure foundations are still visible. The county acquired the preserve in 2001.



*Old mountain still*

## Hunting

In order to control the population of deer on park property, hunting is permitted. Hunters must obtain a special permit issued by the Division to hunt at the park. Visitors during hunting season are strongly encouraged to wear blaze orange or confine visits to Sundays.

With the exception of park properties with reservable facilities, all properties are “carry in / carry out” and trash/recycling receptacles are not provided. Please plan accordingly and do not leave any trash/recyclables behind.

## Jugtown Mountain Preserve

**Location:** The Jugtown Mountain Preserve is located at 408 Mine Road, Asbury 08802 (Bethlehem Township). The park is open from sunrise to sunset. There are no restroom facilities available.

### **Directions from the Clinton Area:**

Take Route 78 west to exit 11. Proceed on Route 173 west for about 2 miles. Turn right onto Mine Road. The entrance to the park is on the left just beyond the Bethlehem Township Building.

### **Directions from the Hampton Area:**

Take Route 635 (also known as Charlestown Road) south to Mine Road. Turn right onto Mine Road and proceed for about 2 1/2 miles. The entrance to the park is on the right.

## Recreational Opportunities

Jugtown Mountain offers hiking opportunities of moderate difficulty. The main trail loops through the woods and along a rocky slope, exposing scenic views of the mountains. Visitors can also explore remnants of past mining operations. Mountain biking and horseback riding are not permitted here.

## Highlands Trail

The Highlands Trail extends 150 miles from Storm King Mountain on the Hudson River in New York south to Riegelsville on the Delaware River in New Jersey. It is a combination of established trails, new trails, and road walking. Blazed with teal-colored diamonds, the trail displays the scenic and natural beauty of the Highlands Region. A section of the trail lies within Jugtown Mountain Preserve, and connects the park with Tower Hill Reserve. For more on the Highlands Trail, visit the New York - New Jersey Trail Conference’s website, <http://www.nynjtc.org/region/highlands-trail>.

## Habitat at Jugtown Mountain

The forest canopy of Jugtown Mountain is dominated by red oaks and tulip trees. The acorns provide food for squirrels, turkeys, and other wildlife. The understory consists of sassafras trees and spicebush.

Vernal pools created from past mining activity exist throughout the park and provide an important habitat for amphibians. These pools are bodies of water that dry up in the summer and fall. They provide a refuge for amphibian larvae to develop to their adult form without the predation of fish. Spotted Salamanders and Wood Frogs are examples of species identified within the preserve.



*Spotted Salamanders*

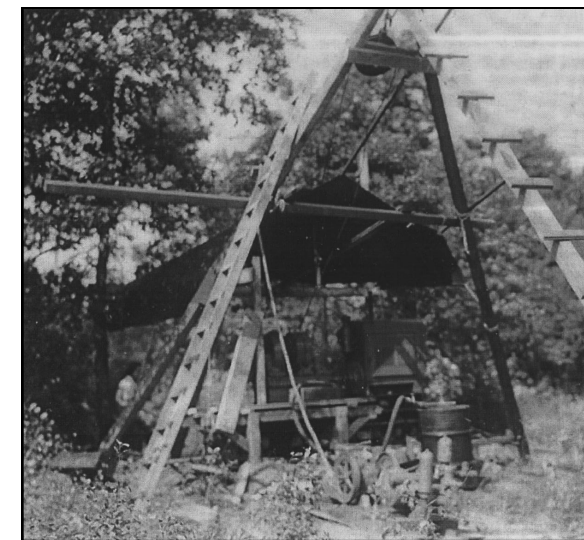
Stone walls and rocky terrain dot the landscape of the preserve. These areas provide shelter to rodents as well as the snakes that prey on them. Jugtown provides a suitable habitat for snakes to create hibernation dens for the winter season.

It is the policy of the County to provide reasonable accommodations to persons with disabilities upon advance notice of need. Persons requiring accommodations should make a request at least two weeks prior to program attendance.

The Hunterdon County Division of Parks & Recreation is dedicated to preserving open space and natural resources, providing safe parks and facilities, and offering educational and recreational opportunities, all contributing to an enhanced quality of life for present and future generations.

# Jugtown Mountain Preserve

## Trail Map and Guide



*Jugtown Mine, 1943*

*(Courtesy of Hunterdon County Democrat)*



Hunterdon County

**Division of Parks & Recreation**

PO Box 2900, Flemington, NJ 08822-2900

1020 State Route 31, Lebanon, NJ 08833

Telephone (908) 782-1158

Fax (908) 806-4057

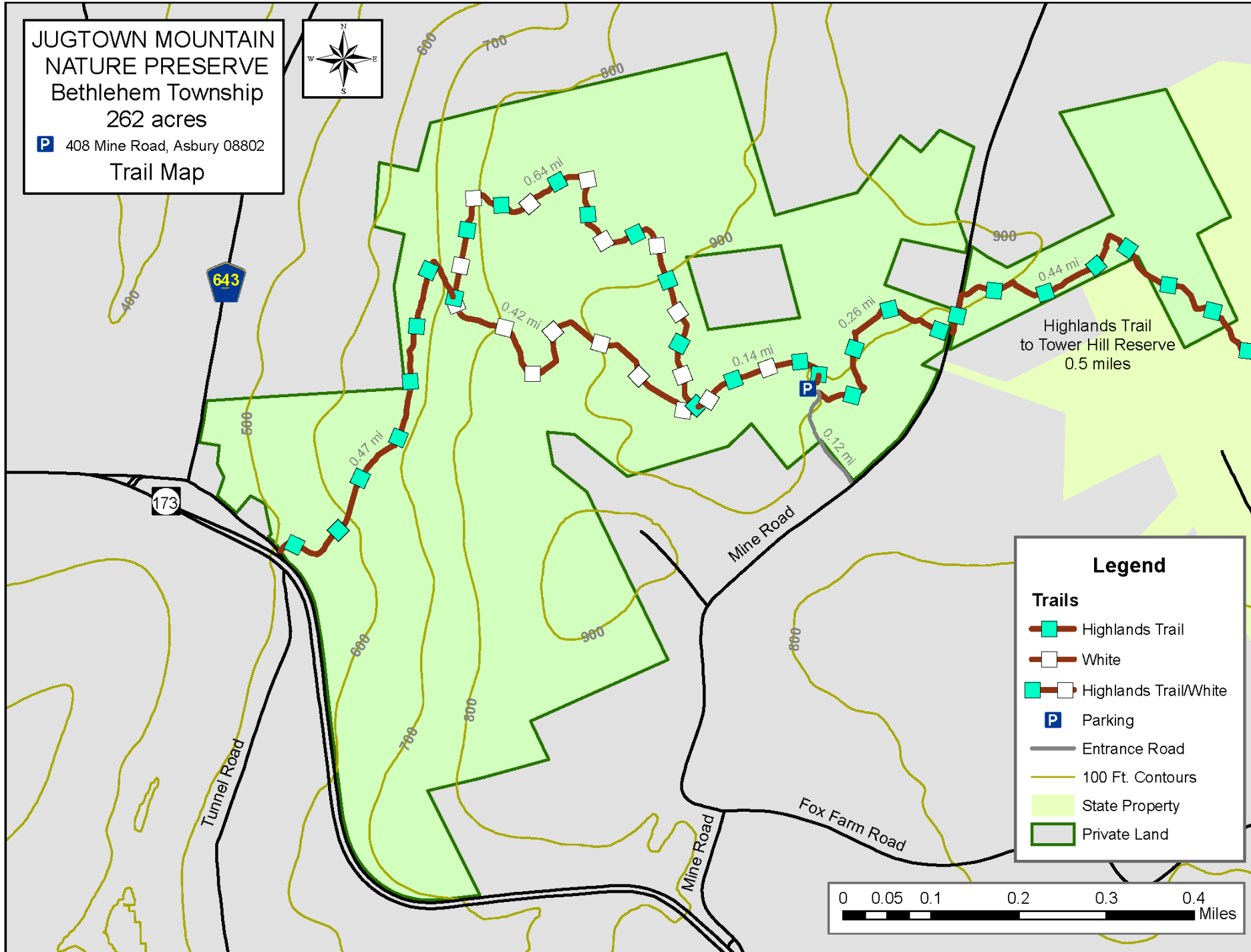
E-mail: [parks@co.hunterdon.nj.us](mailto:parks@co.hunterdon.nj.us)

Website: [www.co.hunterdon.nj.us](http://www.co.hunterdon.nj.us)  
(click on “Parks & Recreation”)

*Office Hours:*

*Monday to Friday 8:00 AM to 4:30 PM*

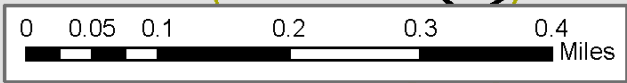
**JUGTOWN MOUNTAIN  
NATURE PRESERVE**  
Bethlehem Township  
262 acres  
408 Mine Road, Asbury 08802  
Trail Map



**Legend**

**Trails**

- Highlands Trail
- White
- Highlands Trail/White
- Parking
- Entrance Road
- 100 Ft. Contours
- State Property
- Private Land



**SUMMARY OF RULES AND REGULATIONS**

The rules and regulations governing use of facilities or properties administered by the Hunterdon County Division of Parks and Recreation are promulgated in accordance with provisions of the N.J. Statutes Title 40:32-7.12, which reads as follows:

"The Board of Chosen Freeholders may by resolution make, alter, amend, and repeal rules and regulations for the supervision, regulation and control of all activities carried on, conducted, sponsored, arranged, or provided for in connection with a public golf course or other county recreational, playground, or public entertainment facility, and for the protection of property, and may prescribe and enforce fines and penalties for the violation of any such rule or regulation."

**These rules and regulations** have been promulgated for the protection of our patrons and for the facilities and natural resources administered by the Hunterdon County Division of Parks and Recreation.

**Permits:** A fully executed Facility Use Permit, issued by the County of Hunterdon for any activity, shall authorize the activity only insofar as it may be performed in strict accordance with the terms and conditions thereof. The State of NJ, County of Hunterdon, or the local municipality may require additional permits.

**Prohibited Acts:** The violation of any Municipal, State, or Federal law. Advertising, solicitation, ice skating, ice fishing, any other on-ice activities, downhill skiing, bathing, fuel-powered modeled aircraft, the release of any animal, explosives of any kind, poisons of any kind, after-hours use, alcohol without a permit in a non-designated area, controlled dangerous substances, weapons, posting of signage, inappropriate attire, and climbing on, or rappelling from any cliff, rock face, or boulder, with, or without the use of specialized equipment.

**Regulated Activity:** The sale of merchandise, aviation, boating, cross-country skiing, bicycling, and sledding. Battery-powered modeled aircraft and horses must be in designated areas, dogs must be restrained with a leash not exceeding six feet, pet waste must be removed, camping/fires are by permit only. All groups of 15 or more must obtain a permit for use of any Park area.

**Prohibited Acts for the Protection of Property:** No person shall make, excavate on, destroy, paint, fill in, cut, remove or tamper with any property, organic or inorganic.

**Prohibited Acts for the Protection of Natural Resources:** No person shall disturb wildlife or vegetation in any manner. No person shall pollute waters, litter, dump debris, or release helium balloons in any property. It is illegal to remove any natural resource from, or introduce any plant material, bulbs, or seeds to any property without a proper permit or license.

**Prohibited Acts for the Protection of People:** No person shall obstruct a county employee/official, interfere with a visitor, conduct any unsafe act, or cause a hazardous condition.

**Vehicles:** All the provisions of the NJ State Motor Vehicle Act apply. Vehicles are not allowed in unauthorized areas. Parking is allowed in designated areas only. **ATVs, dirt bikes, and snowmobiles are prohibited on County Park lands.**

**Enforcement:** The rules and regulations of the County shall be enforced by duly authorized Rangers or representatives of the County under the provision of N.J.S.A. 40:32-2, thru 40:32-7.13. Any person who enters into a County Park for any purpose whatsoever has a duty and is presumed to be aware of the provisions of these rules and regulations governing the use of the facilities and properties administered by the Hunterdon County Division of Parks & Recreation.

**Penalties:** Any person violating any of the provisions of these regulations shall, upon conviction before a court or other adjudicative body of jurisdiction, be liable for the replacement, repair or restoration of damaged property, if any, and shall pay a penalty of not more than one thousand dollars (\$1,000.00) or other amount in the discretion of the court or other adjudicative body, or may be sentenced to imprisonment in the County jail for the term not exceeding ninety (90) days, or both, provided that this section shall not supersede any applicable penalty provision for specific offenses, which may be set forth in the New Jersey Code of Criminal Justice, N.J.S.A. 2C:1-1, et seq., or in any other applicable state or federal law.

**NOTE:** County Park Rangers of the Division of Parks and Recreation have the authority to issue summons and make arrests for violations of rules and regulations governing the use of facilities and properties administered by the Division of Parks and Recreation. This is only a summary of the rules and regulations. Rules applying to special conditions, activities, or situations may be supplemental to these rules and regulations. When special rules apply, they will be posted at affected areas. The complete text of regulations is available for inspection at the Park administration office in Clinton Township during regular business hours.