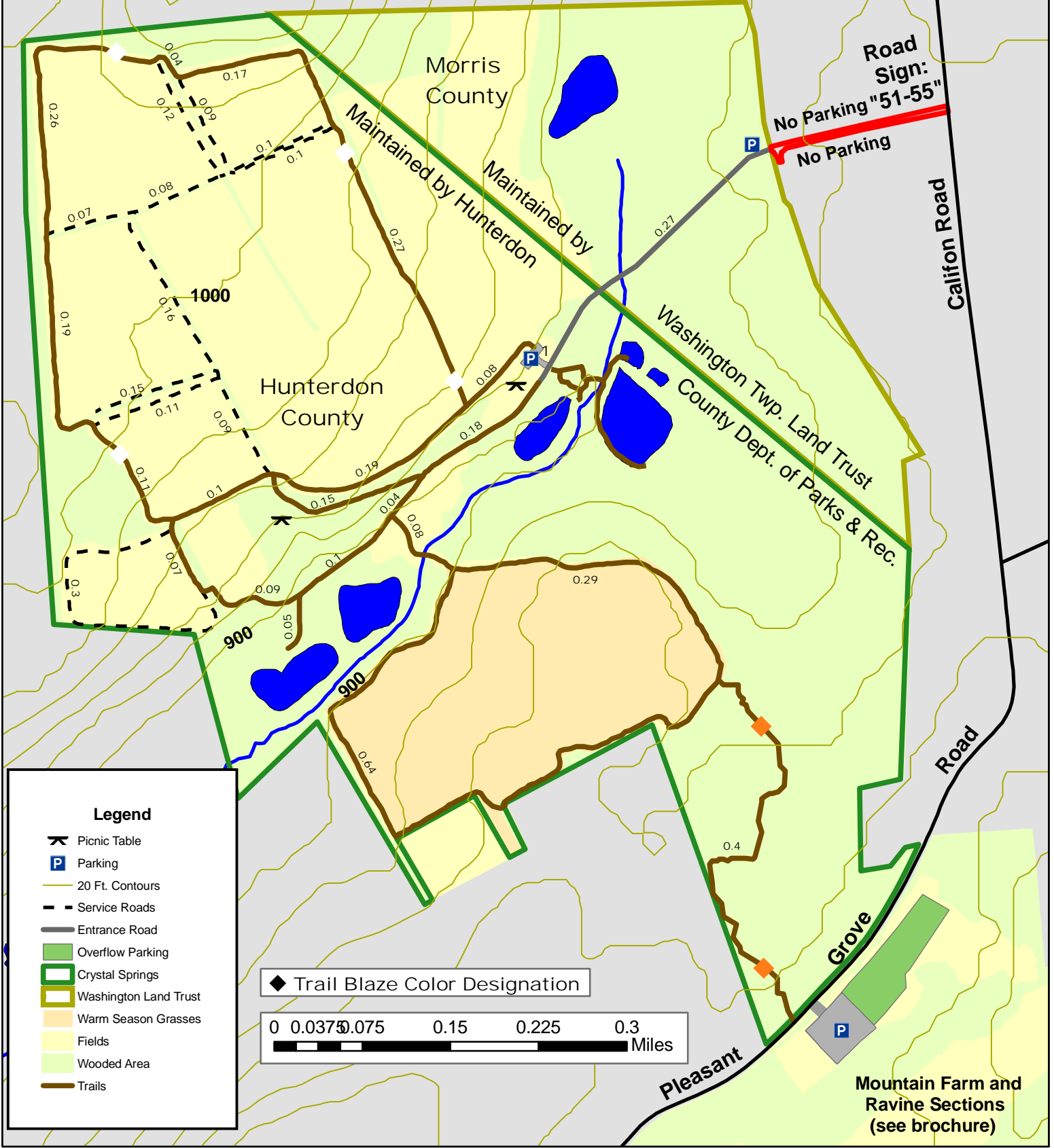


TEETERTOWN PRESERVE CRYSTAL SPRINGS SECTION 232 ACRES

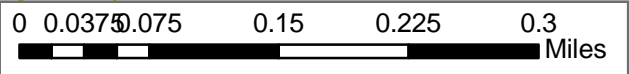
P¹ 21 Pleasant Grove Road, Port Murray 07865
(access from Califon Road, Long Valley 07853)

TRAIL MAP



- Picnic Table
- Parking
- 20 Ft. Contours
- Service Roads
- Entrance Road
- Overflow Parking
- Crystal Springs
- Washington Land Trust
- Warm Season Grasses
- Fields
- Wooded Area
- Trails

Trail Blaze Color Designation



**Mountain Farm and
Ravine Sections
(see brochure)**