

History of Clover Hill Park & South Branch Wildlife Management Area

The Clover Hill Park and South Branch Wildlife Management Area (SBWMA) consist of 553 acres of rolling fields, mature woodlands, and several creeks. While Clover Hill is owned by Hunterdon County, the State of New Jersey owns the SBWMA but entered into an agreement for the County to manage the whole property in 2008.

This property was once along the Keith Line (1686), which divided the provinces of East and West Jersey. John P. Case, Jr., purchased the site for a poultry farm in 1930. The farm had a four-story barn that housed chickens in addition to two metal chick hatchery sheds. Considered the last full-scale chick hatchery in the state, the farm served an average of 60 customers a day. The land was eventually sold for the creation of a pharmaceutical research farm. The County, in conjunction with the State, acquired the property in 2000, with the County owning 116 acres outright.

Hunting

In order to control the population of deer on park property, hunting is permitted. To hunt either the County- or State-owned portion of the park, hunters must obtain a permit from the County. Visitors during between September and February are strongly encouraged to wear blaze orange or confine their visits to Sundays on the County-owned portion. The State-owned portion is subject to current Fish & Wildlife Rules and Regulations, which permit hunting on Sundays.

The Hunterdon County Division of Parks & Recreation is dedicated to preserving open space and natural resources, providing safe parks and facilities, and offering educational and recreational opportunities, all contributing to an enhanced quality of life for present and future generations.

Clover Hill Park & SBWMA

Location: Clover Hill Park and SBWMA are located in Raritan Township at 19 Clover Hill Road, Flemington 08822, and Hillsborough Road in Somerset County. The park is open from sunrise to sunset. There are no restroom facilities.

Directions from the Flemington Area to South Branch WMA:

From the Flemington Circle, proceed north on Route 202 for 1/2 mile to the intersection with Route 650 (Voorhees Corner Road). Take Route 650 to the end and turn left onto Route 613. Go about one mile and turn right onto Hillsborough Road, which is the last turn before you cross the river. The park entrance is on the right in about 1/2 mile.

Directions from the Flemington Area to Clover Hill Park:

From the Flemington Circle, proceed north on Route 202 for 1/2 mile to the intersection with Route 650 (Voorhees Corner Road). Take Route 650 to the end and turn right onto Route 613. Go a short distance and turn left onto Clover Hill Road. The park entrance is on the left about 1/3 mile. When you park, please do not block the gate.

Agricultural Use

The County contracts much of the land to a local farmer, who has agreed to comply with a management plan. *Please be considerate. Stay on the trails and do not pick or damage any crops.*



It is the policy of the County to provide reasonable accommodations to persons with disabilities upon advance notice of need. Persons requiring accommodations should make a request at least two weeks prior to program attendance.

Recreation Opportunities

Clover Hill Park & SBWMA are undeveloped parks. The trail system consists of old paved driveways and the farmer's service roads. One can use the trail system to hike from Clover Hill Road across the park to Hillsborough Road in Somerset County. Mountain biking, cross-country skiing, and horseback riding are all permitted uses on the trails within this park. A small pond near the Hillsborough Road entrance is designated for catch and release fishing.

Habitat of Clover Hill Park & SBWMA

While most of the SBWMA is contracted for agriculture, some of the fields are managed for grassland habitat. A multi-agency team lead by New Jersey Audubon has been reclaiming and re-seeding old fields into warm season grasses with the hopes of establishing several grassland bird species, such as Bobolink, Eastern Meadowlark, and Grasshopper Sparrow. Along the trail system, visitors will see artificial houses to encourage Eastern Bluebirds and American Kestrels. Migrating waterfowl and herons may stop for a break at the pond.



Grasshopper Sparrow

There are a few wooded areas throughout the park and evidence of mammals has been found, such as tracks and scat from Raccoon and Virginia Opossum. Red Fox and Coyote have been seen moving through the park.

(Revised 3/2017)

With the exception of park properties with reservable facilities, all properties are "carry in / carry out" and trash/recycling receptacles are not provided. Please plan accordingly and do not leave any trash/recyclables behind.

Clover Hill Park & the South Branch Wildlife Management Area

Trail Map and Guide



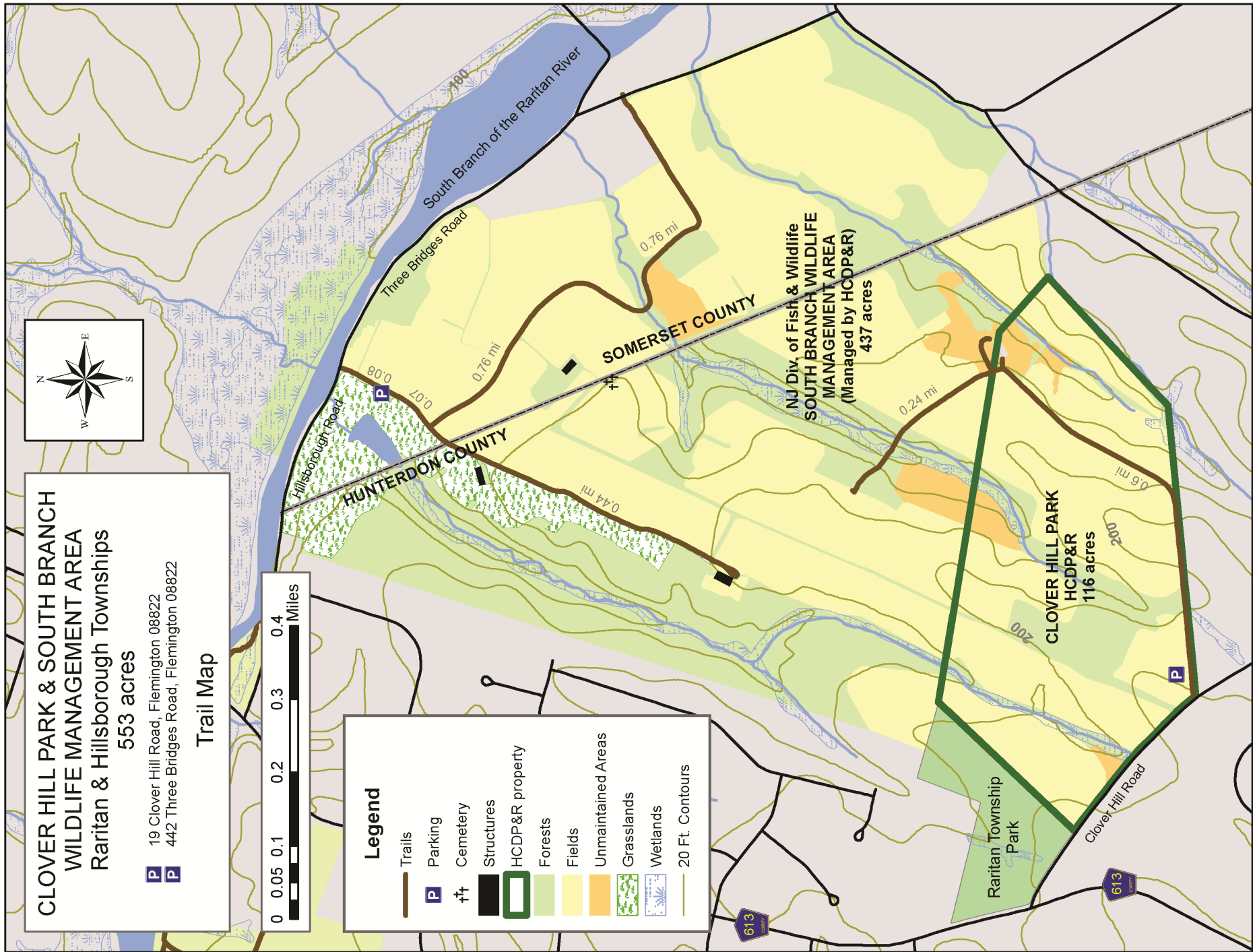
Northern Harrier



Hunterdon County
Division of Parks & Recreation
PO Box 2900, Flemington, NJ 08822-2900
1020 State Route 31, Lebanon, NJ 08833
Telephone (908) 782-1158
Fax (908) 806-4057

E-mail: parks@co.hunterdon.nj.us
Website: www.co.hunterdon.nj.us
(click on "Parks & Recreation")

Office Hours:
Monday to Friday 8:00 AM to 4:30 PM



SUMMARY OF RULES AND REGULATIONS

The rules and regulations governing use of facilities or properties administered by the Hunterdon County Division of Parks and Recreation are promulgated in accordance with provisions of the N.J. Statutes Title 40:32-7.12, which reads as follows:

"The Board of Chosen Freeholders may by resolution make, alter, amend, and repeal rules and regulations for the supervision, regulation and control of all activities carried on, conducted, sponsored, arranged, or provided for in connection with a public golf course or other county recreational, playground, or public entertainment facility, and for the protection of property, and may prescribe and enforce fines and penalties for the violation of any such rule or regulation."

These rules and regulations have been promulgated for the protection of our patrons and for the facilities and natural resources administered by the Hunterdon County Division of Parks and Recreation.

Permits: A fully executed Facility Use Permit, issued by the County of Hunterdon for any activity, shall authorize the activity only insofar as it may be performed in strict accordance with the terms and conditions thereof. The State of NJ, County of Hunterdon, or the local municipality may require additional permits.

Prohibited Acts: The violation of any Municipal, State, or Federal law. Advertising, solicitation, ice skating, ice fishing, any other on-ice activities, downhill skiing, bathing, fuel-powered modeled aircraft, the release of any animal, explosives of any kind, poisons of any kind, after-hours use, alcohol without a permit in a non-designated area, controlled dangerous substances, weapons, posting of signage, inappropriate attire, and climbing on, or rappelling from any cliff, rock face, or boulder, with, or without the use of specialized equipment.

Regulated Activity: The sale of merchandise, aviation, boating, cross-country skiing, bicycling, and sledding. Battery-powered modeled aircraft and horses must be in designated areas, dogs must be restrained with a leash not exceeding six feet, pet waste must be removed, camping/fires are by permit only. All groups of 15 or more must obtain a permit for use of any Park area.

Prohibited Acts for the Protection of Property: No person shall make, excavate on, destroy, paint, fill in, cut, remove or tamper with any property, organic or inorganic.

Prohibited Acts for the Protection of Natural Resources: No person shall disturb wildlife or vegetation in any manner. No person shall pollute waters, litter, dump debris, or release helium balloons in any property. It is illegal to remove any natural resource from, or introduce any plant material, bulbs, or seeds to any property without a proper permit or license.

Prohibited Acts for the Protection of People: No person shall obstruct a county employee/official, interfere with a visitor, conduct any unsafe act, or cause a hazardous condition.

Vehicles: All the provisions of the NJ State Motor Vehicle Act apply. Vehicles are not allowed in unauthorized areas. Parking is allowed in designated areas only. **ATVs, dirt bikes, and snowmobiles are prohibited on County Park lands.**

Enforcement: The rules and regulations of the County shall be enforced by duly authorized Rangers or representatives of the County under the provision of N.J.S.A. 40:32-2, thru 40:32-7.13. Any person who enters into a County Park for any purpose whatsoever has a duty and is presumed to be aware of the provisions of these rules and regulations governing the use of the facilities and properties administered by the Hunterdon County Division of Parks & Recreation.

Penalties: Any person violating any of the provisions of these regulations shall, upon conviction before a court or other adjudicative body of jurisdiction, be liable for the replacement, repair or restoration of damaged property, if any, and shall pay a penalty of not more than one thousand dollars (\$1,000.00) or other amount in the discretion of the court or other adjudicative body, or may be sentenced to imprisonment in the County jail for the term not exceeding ninety (90) days, or both, provided that this section shall not supersede any applicable penalty provision for specific offenses, which may be set forth in the New Jersey Code of Criminal Justice, N.J.S.A. 2C:1-1, et seq., or in any other applicable state or federal law.

NOTE: County Park Rangers of the Division of Parks and Recreation have the authority to issue summons and make arrests for violations of rules and regulations governing the use of facilities and properties administered by the Division of Parks and Recreation. This is only a summary of the rules and regulations. Rules applying to special conditions, activities, or situations may be supplemental to these rules and regulations. When special rules apply, they will be posted at affected areas. The complete text of regulations is available for inspection at the Park administration office in Clinton Township during regular business hours.